

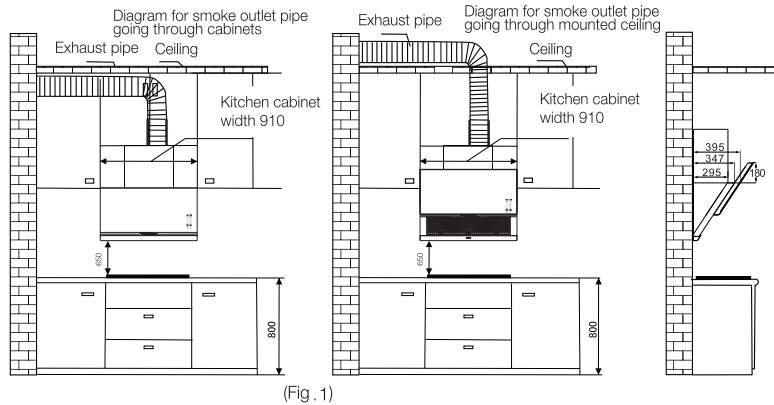
Installation Instructions

(A) Installation requirements

1. Installed walls must have the capacity to take the weight of the exhaust hood.
2. The exhaust hood should not be in contact with electrical circuits within or outside the wall in order to avoid electric shock.
3. The exhaust hood should not be installed in a place with too much air current so as not to decrease the smoke removal efficacy.
4. The smoke exit of the exhaust hood should be less than or equal to 1.5 m from the upper outlet; the exhaust pipe should avoid being too long or having too many turnings (usually one) which will affect the smoke removal efficacy.
5. If the exhaust pipe is going through cabinets or mounted ceiling, please refer to Figure 1 for installation dimensions.

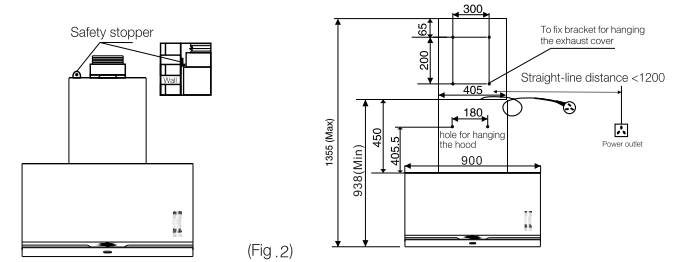
B) installation method

1. The bottom of the exhaust hood is recommended to be 650mm above the top of the stove,
2. As shown in the installation diagram (Fig. 2), drill two holes in the wall, 8mm in diameter and 180mm apart. Bury in two plastic expansion pipes, and fasten the bracket mounting for hanging the hood with two wooden screws.



3. If a top exhaust cover needs to be installed, drill 4 holes of 8mm diameter (Fig. 2), and bury in 4 plastic expansion pipes. Fix the bracket for hanging the exhaust cover to the wall with 4 wooden screws.
4. Fix the exhaust outlet seat above the exhaust hood, insert the exhaust pipe into the groove at the bottom of the ring (note the direction of the wind), then use 2 ST2.9x10 self-tapping screw to fix the pipe to the ring.
5. Hang the exhaust hood on the bracket mounting for hanging the hood; ensure it is firmly positioned, level and not skewed.
6. After the exhaust hood is in position, determine the drilling position as shown in the installation diagram (Fig. 2), use impact drill to create holes and firmly bury in the expansion pipes and fix the safety stopper. Screw in the ST5x19 screw to prevent the hood from accidentally coming off the hooks under external forces.
7. Fix the other end of the exhaust pipe to face the outdoor environment, and check that the pipe wall is neither inflated nor sunken. Ensure that it is bendable, the connected joints are tightly sealed, and the damper can fall back unobstructed.
8. Pulled out the top exhaust cover and fasten it to the bracket for hanging the exhaust cover with 4 special screws (in accessories).
9. Horizontally insert the oil cup to the bottom of the oil filter, and push into position.
10. Connect the main supply cord of the appliance to a properly grounded supply connection. Test run the machine to confirm that the appliance is functioning correctly.

Note: the diameter of the outlet hole in the wall should be similar to that of the exhaust pipe and should not be too small. Otherwise it will cause poor smoke ventilation, increased noise and reduced wind volume, etc.



C) Checking the installation

The user should first and foremost make sure the exhaust hood is installed correctly in place.

(D) Power settings

Before connecting to the mains supply, ensure that the mains voltage corresponds to the voltage. This exhaust hood uses a AC220-240V/50Hz power supply

This appliance is fitted with a 3 core mains supply cable:

The wire that is coloured blue must be connected to the terminal which is marked with the letter N;

The wire that is coloured brown must be connected to the terminal which is marked with the letter L;

The wire that is coloured green must be connected to the terminal which is marked with the letter E.

WARNING: The supply connection need provide full disconnection under overvoltage category III.