



EWF7028M6WA

**Enjoy peace of mind.
Register your appliance today.**

Stay updated on better living services,
safety notices and shop for accessories.

- 1. Open the camera app on your smartphone and point at the QR code to scan.**

Product Registration QR code is located on the front of your appliance or inside the door rim.

- 2. Tap the notification or link to open the registration form.**
- 3. Complete your details and enjoy peace of mind.**

Full version of the User Manual is available on the Product registration link via the above QR code. Alternatively, visit www.electrolux.com for more information.

Welcome to Electrolux! Thank you for choosing our appliance.



Get usage advice, brochures, troubleshooter tips, service information, purchase accessories & spareparts, and register your product online at : www.electrolux.com

CUSTOMER CARE AND SERVICE

We recommend using original spareparts. Scan the QR code on the rating plate to get professional repair. When contacting our service department, please ensure you have the following data available, which can be found on the rating plate: Model, PNC, Serial Number.



Warning/caution-safety information.



General information and tips.



Environmental information.

Subject to change without prior notice.

CONTENT

1. Important instructions for safety and environment.	3
2. Installation	8
3. Preparation	12
4. Product operation	18
5. Maintenance and cleaning	25
6. Technical specifications	28
7. Troubleshooting	30

1. Important instructions for safety and environment

This section contains safety instructions that will help protect against the risk of personal injury or property damage.

1.1 General safety

- This product can be used by children aged 8 and above, as well as by individuals whose physical, sensory, or mental capabilities are not fully developed, or who lack experience and knowledge, provided that they are supervised or trained in the safe usage of the product and the risks it presents. Children must not play with the product. Cleaning and maintenance should not be performed by children unless supervised. Children under 3 years old should be kept away unless continuously supervised.
- Never place the product on a carpeted floor. Otherwise, the lack of airflow beneath the machine will cause electrical parts to overheat, leading to problems with your product.
- If the product fails, do not operate it until it has been repaired by an Authorized Service Agent. There is a risk of electric shock!
- This product is designed to resume operating in the event of powering on after a power interruption. If you wish to cancel the programme, see "Cancelling the programme" section.
- Connect the product to a grounded outlet protected by a 13 A fuse. Do not neglect to have the grounding installation made by a qualified electrician. Our company shall not be liable for any damages that may arise from using the product without proper grounding in accordance with local regulations.

- The water supply and draining hoses must be securely fastened and remain undamaged. otherwise, there is the risk of water leakage.
- Never open the loading door or remove the filter while there is still water in the drum. Otherwise, there is a risk of flooding and injury from hot water.
- Do not force open the locked loading door. The door will be ready to open just a few minutes after the washing cycle ends. If you force the loading door open, it may damage the door and the lock mechanism.
- Unplug the product when not in use.
- Never wash the product by spreading or pouring water onto it! There is a risk of electric shock! Never touch the plug with wet hands! Never unplug by pulling on the cable, always pull out by grabbing the plug.
- Use detergents, softeners and supplements suitable for automatic washing machines only.
- Follow the instructions on the textile tags and the detergent package.
- The product must be unplugged during installation, maintenance, cleaning and repair procedures.
- Always have the repairing procedures carried out by the Authorized Service Agent. The manufacturer shall not be held liable for damages that may arise from procedures carried out by unauthorized persons.
- If the power cable is damaged, it must be replaced by the manufacturer, after-sales service or a similarly qualified person (preferably an electrician) or someone designated by the importer, in order to avoid possible risks.
- Place the product on a rigid, flat and level surface.
- Do not place it on a long-pile rug or similar surfaces.

- Do not place the product on a high platform or near the edge on a cascaded surface.
- Do not place the product on the power cable. Never use sponge or scrub materials. These will damage the painted, chrome plated and plastic surfaces.
- The water supply pressure required to run the product is between 1 to 10 bars (0.1- 1MPa).
- Do not use old or used water inlet hoses on the new product, as they may cause stains on your laundry.
- Never place the product on a carpet-covered floor; otherwise, the lack of airflow beneath the machine will cause electrical parts to overheat, resulting in problems with your product.


1.2 Intended use

- This product has been designed for domestic use. It is not suitable for commercial use and must not be used beyond its intended purpose.
- The product must only be used for washing and rinsing laundry that are appropriately marked.
- The manufacturer waives any responsibility arising from incorrect usage or transportation.
- This appliance is intended for household and similar applications, such as:
 - Staff kitchen areas in shops, offices and other working environments;
 - Farm houses;
 - Clients use in hotels, motels and other residential type environments;

- bed and breakfast type environments;
- areas for communal use in blocks of flats or in launderettes.

1.3 Children's safety

- Packaging materials are dangerous for children. Keep them stored in a safe place out of their reach.
- Electrical products can be dangerous for children. Keep children away from the product when it is in use and do not allow them to tamper with it. Use child locks to prevent children from accessing the product.
- Always remember to close the loading door when leaving the room where the product is located.
- Store all detergents and additives in a safe place out of reach of children. Make sure to close the cover of the detergent container or seal the detergent package.

	<p>When washing laundry at high temperatures, the loading door glass becomes hot. Therefore, especially keep children away from the loading door of the machine while the washing operation is in progress.</p>
----------------------------------------------------------------------------------	-----------------------------------------------------------------------------------------------------------------------------------------------------------------------------------------------------------------

1.4 Package information

- The packaging materials of the product are manufactured from recyclable materials in accordance with our national environmental regulations. Do not dispose of the packaging materials with domestic or other wastes. Take them to the packaging material collection points designated by the local authorities.

1.5 Disposing of the waste product

- This product has been manufactured with high-quality parts and materials that can be reused and are suitable for recycling. Therefore, do not dispose of the product with normal domestic waste at the end of its service life. Take it to a collection point for the recycling of electrical and electronic equipment. Please consult your local authorities to find the nearest collection point. Help protect the environment and natural resources by recycling used products. For children's safety, cut the power cable and disable the locking mechanism of the loading door so that it cannot function before disposing of the product.

1.6 Compliance with WEEE Directive



This product complies with the EU WEEE Directive (2012/19/EU). This product bears a classification symbol for waste electrical and electronic equipment (WEEE).

It has been manufactured with high-quality parts and materials that can be reused and are suitable for recycling. Do not dispose of this product with normal domestic or other wastes at the end of its service life. Take it to a collection center for the recycling of electrical and electronic equipment. Please consult your local authorities to find out about these collection centers.

Compliance with RoHS Directive:

The product you have purchased complies with EU RoHS Directive (2011/65/EU). It does not contain harmful and prohibited materials specified in the Directive.

2. Installation

Refer to the nearest Authorized Service Agent for installation of the product. To prepare the product for use, review the information in the user manual and ensure that the electricity, tap water supply, and water drainage systems are suitable before contacting the Authorized Service Agent. If they are not suitable, call a qualified technician and plumber to make any necessary arrangements.

i NOTE

- Preparation of the location and electrical, tap water, and waste water installations at the place of installation is the customer's responsibility.
- Make sure that the water inlet and discharge hoses, as well as the power cable, are not folded, pinched, or crushed while pushing the product into place after installation or cleaning procedures.

! WARNING!

- Installation and electrical connections of the product must be carried out by the Authorized Service Agent. The manufacturer shall not be held liable for damages that may arise from procedures carried out by unauthorized persons.
- Prior to installation, visually inspect the product for any defects. If defects are found, do not proceed with installation. Damaged products pose safety risks.

2.1 Appropriate installation location

- Place the machine on a rigid floor. Do not place it on a long-pile rug or similar surfaces.

- Place the machine on a rigid floor. Do not place it on a long-pile rug or similar surfaces. The total weight of the washing machine and dryer with a full load, when placed on top of each other, reaches approximately 180 kilograms. Place the product on a solid and flat floor that has sufficient load-carrying capacity.
- Do not place the product on the power cable.
- Do not install the product in places where the temperature may fall below 0°C.
- Place the product at least 1 cm away from the edges of other furniture.

2.2 Removing packaging reinforcement

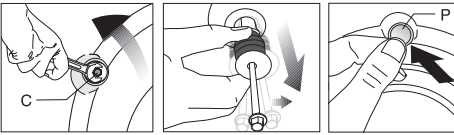
Tilt the machine backwards to remove the packaging reinforcement. Pull the ribbon to remove the packaging reinforcement.



2.3 Removing the transportation locks

WARNING!

- Do not remove the transportation locks before removing the packaging reinforcement. Remove the transportation safety bolts before operating the washing machine, or the product will be damaged.
- Loosen all the bolts with a suitable spanner until they rotate freely **(C)**.
 - Remove transportation safety bolts by turning them gently.
 - Attach the plastic covers supplied in the User Manual bag into the holes on the rear panel. **(P)**



NOTE

- Keep the transportation safety bolts in a safe place to reuse them when the washing machine needs to be moved again in the future.
- Never move the product without properly fixing the transportation safety bolts in place!

2.4 Accessories

Plastic Caps

To close the holes on the rear side of the cabinet after the removal of the transit bolts.



Plastic Hose Guide

To connect the drain hose on the edge of a sink.



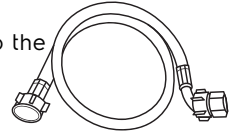
Use manual

Make it easier for people to know and understand the Product.



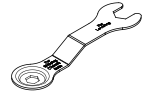
Water inlet hose

Connect the hose to the water inlet on the product.



Spanner

Loosen all the bolts on the rear panel.



2.5 Connecting water supply

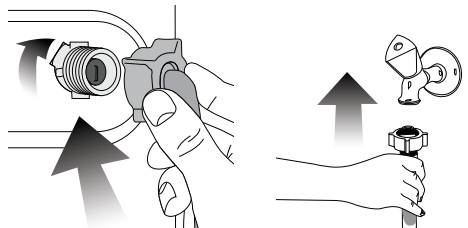
NOTE

The water supply pressure required to operate the product ranges from 1 to 10 bars (0.1 - 1 MPa). It is necessary to have a flow of 10 - 80 liters of water per minute from a fully open tap for the machine to operate smoothly. Attach a pressure reducing valve if the pressure is higher.

WARNING!

- Models with a single water inlet should not be connected to the hot water tap. Doing so may damage the laundry or cause the product to switch to protection mode, preventing operation.
- Do not use old or used water inlet hoses with the new product, as this may cause stains on your laundry.

- Tighten all hose nuts by hand. Never use a tool when tightening the nuts.



- Open the taps completely after making the hose connection to check for water leaks at the connection points. Check for water leaks at the connection points; if any leaks occur, turn off the tap and remove the nut. Carefully retighten the nut after checking the seal. To prevent water leaks and resulting damages, keep the taps closed when the machine is not in use.

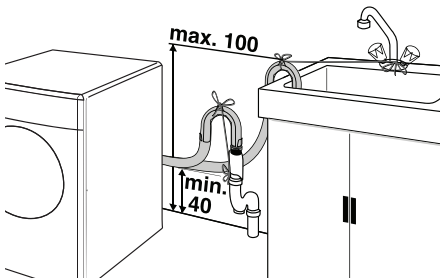
2.6 Connecting to the drain

- The end of the drain hose must be directly connected to the waste water drain or to the washbasin.

⚠ WARNING!

Your house could flood if the hose comes loose during water discharge. Moreover, there is a risk of scalding due to high washing temperatures! To prevent these situations and ensure smooth water intake and discharge of the machine, securely fix the end of the discharge hose so that it cannot come out.

- The hose should be attached at a height of at least 40 cm and at most 100 cm.
- If the hose is elevated after being laid on the floor or close to the ground (less than 40 cm above the ground), water discharge becomes more difficult, and the laundry may come out excessively wet. Therefore, follow the heights described in the diagram.



- To prevent dirty water from flowing back into the machine and ensure easy discharge, do not submerge the hose end into dirty water or Insert it more than 15 cm into the drain. If the hose is too long, trim it to the appropriate length
- Ensure the hose end is not bent stepped on. or pinched between the drain and the machine. If the hose is too short, use an original extension hose. The total length of the hose should not exceed 3.2 m
- To prevent water leaks, securely connect the extension hose to the product's drain hose using an appropriate clamp to ensure remains tightly fitted and leak-free

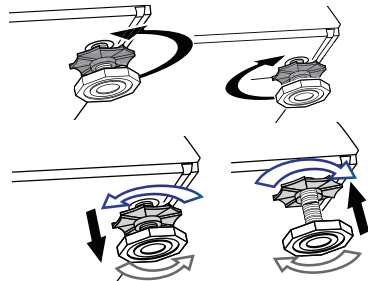
2.7 Adjusting the feet

⚠ WARNING!

To ensure quiet operation and minimal vibration, the product must be positioned level and balanced on its feet. Adjust the machine's feet to achieve proper balance. Otherwise, it may shift during operation, leading to potential issues with crushing and excessive vibration.

For plastic feet:

- Loosen the lock nuts on the feet by hand.
- Adjust the feet until the product stands level and balanced.
- Tighten all lock nuts again by hand.

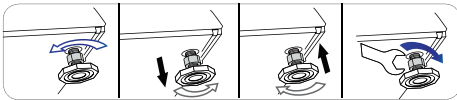


⚠ WARNING!

Do not use any tools to loosen the lock nuts. Otherwise, they will get damaged.

For metal feet:

1. Loosen the lock nuts on the feet with a spanner.
2. Adjust the feet until the product stands stable and balanced.
3. Tighten all lock nuts by spanner again.



2.8 Electrical connection

Connect the product to a grounded outlet protected by a 13 A fuse. Our company shall not be liable for any damages that arise from using the product without proper grounding in accordance with local regulations.

- Connection must comply with national regulations.
- The power cable plug must be within easy reach after installation.
- If the current value of the fuse or breaker in the house is less than 13 Amps, have a qualified electrician install a 13 Amp fuse.
- The voltage specified in the "Technical specifications" section must match your mains voltage.
- Do not make connections via extension cables or multiplugs.

⚠ WARNING!

Damaged power cables must be replaced by the Authorized Service Agents.

Transportation of the product

1. Unplug the product before transporting it.
2. Remove water drain and water supply connections.
3. Drain all water that has remained in the product (SEE 5.5).
4. Install transportation safety bolts in the reverse order of removal procedure (SEE 2.3).

i NOTE

- Never move the product without the transportation safety bolts properly fixed in place!

⚠ WARNING!

Packaging materials are dangerous to children. Keep them in a safe place out of reach.

3. Preparation

3.1 Sorting the laundry

- Sort laundry according to fabric type, color, degree of soiling, and allowable water temperature. Always follow the instructions given on the garment tags.

3.2 Preparing laundry for washing

- Laundry items with metal attachments such as underwired bras, belt buckles, or metal buttons will damage the machine. Remove the metal pieces or wash the clothes by putting them in a laundry bag or pillowcase.
- Take out all substances from the pockets, such as coins, pens, and paper clips. Turn pockets inside out and brush them. Such objects may damage the product or cause noise problems.
- Put small-sized clothes, such as infant's socks and nylon stockings, in a laundry bag or pillowcase.
- Place curtains in without compressing them. Remove curtain attachment items.
- Fasten zippers, sew loose buttons, and mend rips and tears.
- Wash products labeled as machine washable or hand washable only with an appropriate program.
- Do not wash colors and whites together. New dark-colored cottons release a lot of dye; wash them separately.
- Treat tough stains properly before washing. If unsure, check with a dry cleaner.
- Use only dyes/color changers and limescale removers suitable for machine wash. Always follow the instructions on the package.
- Wash trousers and delicate laundry turned inside out.

- Before washing laundry items made of Angora wool, keep them in the freezer for a few hours to reduce pilling.
- For laundry exposed to materials like flour, lime dust, milk powder, etc., shake them off thoroughly before placing them into the machine. These substances can accumulate on the inner parts of the machine over time, potentially causing damage.

3.3 Things to be done for energy saving

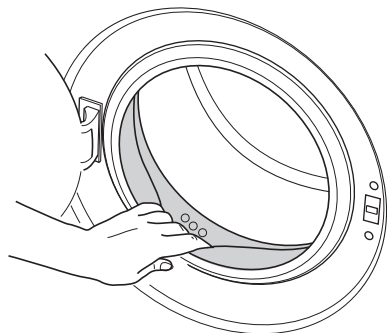
Following information will help you use the product in an ecological and energy-efficient manner.

- Operate the product at the highest capacity allowed by the program you have selected, but do not overload. See the "Program and consumption table."
- Always follow the instructions on the detergent packaging.
- Wash slightly soiled laundry at low temperatures.
- Use faster programs for small quantities of lightly soiled laundry.
- Do not use prewash and high temperatures for laundry that is not heavily soiled or stained.
- If you plan to dry your laundry in a dryer, select the highest spin speed recommended during washing process.
- Do not use detergent in excess of the amount recommended on the detergent package.

3.4 Initial use

Before using the product for the first time, ensure all preparations are carried out according to the instructions in the 'Important Safety Instructions' and 'Installation' sections. To prepare the product for washing laundry,

initiate the Drum Cleaning program as the first operation. If your product does not feature a Drum Cleaning program, follow the Initial Use procedure outlined in the '5.2 Cleaning the loading door and the drum' section of the user manual.



i NOTE

- Use an anti-limescale suitable for the washing machines.
- Some water might have remained in the product due to the quality control processes in the production. It is not harmful for the product.

3.5 Correct load capacity

The maximum load capacity depends on the type of laundry, the degree of soiling, and the selected washing program. The machine automatically adjusts the amount of water based on the weight of the laundry loaded.

! WARNING!

Follow the information provided in the "Programme and Consumption Table". Overloading the machine can reduce washing performance and may cause noise and vibration problems.

3.6 Loading the laundry

1. Open the loading door.
2. Place laundry items loosely into the machine.

3. Push the loading door to close until you hear a locking sound. Ensure that no items are caught in the door.

i NOTE

The loading door is locked while a programme is running. The door can only be opened shortly after the programme comes to an end.

! WARNING!

In case of misplacing the laundry, noise and vibration problem may occur in the machine.

3.7 Using detergent and softener

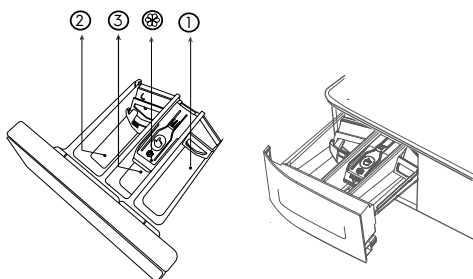
i NOTE

When using detergent, fabric softener, starch, fabric dye, bleach, or limescale remover, carefully read the manufacturer's instructions on the package and follow the recommended dosage. Use a measuring cup if available.

Detergent Drawer

The detergent drawer is composed of three compartments:

- (1) for prewash
- (2) for main wash
- (3) for softener
- (*) in addition, there is siphon piece in the softener compartment.



3.7 Using detergent and softener

- Add detergent and softener before starting the washing programme.
- Never leave the detergent drawer open while the washing programme is running!
- When using a programme without prewash, do not put any detergent into the prewash compartment (compartment no. "1").
- In a programme with prewash, do not put liquid detergent into the prewash compartment (compartment no. "1").
- Do not select a programme with prewash if you are using a detergent bag or dispensing ball. Place the detergent bag or the dispensing ball directly among the laundry in the machine.
- If you are using liquid detergent, do not forget to place the liquid detergent cup into the main wash compartment (compartment no. "2").

Choosing the detergent type

The type of detergent to be used depends on the type and colour of the fabric.

- Use different detergents for colored and white laundry.
- Wash delicate clothes only with special detergents (such as liquid detergent or wool shampoo) designed solely for delicate fabrics. When washing dark-colored clothes and quilts, it is recommended to use liquid detergent.
- Wash woolens with special detergent specifically formulated for woolens.



WARNING!

- Use only detergents manufactured specifically for washing machines.
- Do not use laundry soap powder.

Adjusting detergent amount

The amount of washing detergent to be used depends on the amount of laundry, the degree of soiling and water hardness.

- Do not use amounts exceeding the dosage quantities recommended on the detergent package to avoid problems such as excessive foam, poor rinsing, unnecessary expenses and environmental impact.
- Use less detergent for small amounts or lightly soiled clothes.

Using softeners

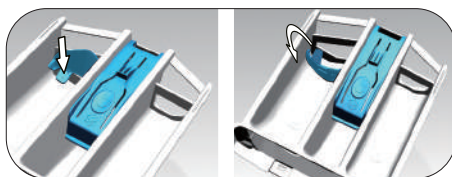
Pour the fabric softener into the designated compartment of the detergent drawer.

- Do not exceed the maximum level indicated in the softener compartment.
- If the fabric softener has thickened, dilute it with water before pouring it into the detergent drawer.

Using liquid detergents

If the product is equipped with a liquid detergent part:

- When using liquid detergent, pull the dispenser towards you. The part that drops down will act as a barrier for the liquid detergent. Clean the dispenser with water if necessary while it is in place or after removing it. If using powder detergent, ensure the dispenser is secured in the top position.



Using gel and tablet detergent

Apply the following instructions when using tablet, gel and similar detergents.

- If the gel detergent is fluid and your washing machine does not have a dedicated liquid detergent container, pour the gel detergent into the main wash detergent compartment during the first water intake. If your washing machine has a liquid detergent container, fill it with detergent before starting the program.
- If the gel detergent is not fluid or is in the form of a capsule or tablet, place it directly into the drum before washing.
- Place tablet detergents into the main wash compartment (compartment no. "2") or directly into the drum before washing.

NOTE

- Tablet detergents can leave residues in the detergent compartment. If this happens, in future washes, place the tablet detergent between the laundry items, near the bottom of the drum.
- When using tablet or gel detergent, do not select the prewash function.

Using starch

- Add liquid starch, powder starch or fabric dye into the softener compartment.
- Do not use softener and starch together in a washing cycle.
- Wipe the inside of the machine with a damp and clean cloth after using starch.

Using bleaches

- Choose a program with a prewash option and add the bleaching agent at the start of the prewash cycle. Do not place detergent in the prewash compartment. Alternatively, select a program with an extra rinse feature and add the bleaching agent when the machine begins taking water from the detergent compartment during the initial rinsing step.
Do not mix bleaching agent and detergent together.
- Use only a small amount (approximately 50 ml) of bleaching agent and ensure thorough rinsing of clothes to avoid skin irritation. Do not pour the bleaching agent directly onto clothes and avoid using it on colored fabrics. When using oxygen-based bleaches, select a program that operates at a lower temperature. Oxygen-based bleaches can be used alongside detergents. If the consistency of the bleach differs from the detergent, add the detergent first into compartment no. "2" of the detergent drawer. Wait for the detergent to dispense as the machine fills with water, then add the bleaching agent from the same compartment while water continues to fill the machine.

Using limescale remover

When required, use limescale removers manufactured specifically for washing machines only.

3.8 Tips for efficient washing

		Clothes			
		Light Colors and Whites	Colors	Black/Dark Colors	Delicates/Woolens/Silks
		(Recommended temperature range based on soiling level: 40-90°C)	(Recommended temperature range based on soiling level: cold -40°C)	(Recommended temperature range based on soiling level: cold -40°C)	(Recommended temperature range based on soiling level: cold -30°C)
Soiling Level	Heavily Soiled (Difficult stains such as grass, coffee, fruits and blood.)	It may be necessary to pre-treat the stains or perform prewash. Powder and liquid detergents recommended for whites can be used at dosages recommended for heavily soiled clothes. It is recommended to use powder detergents to clean clay and soil stains and the stains that are sensitive to bleaches.	Powder and liquid detergents recommended for colors can be used at dosages recommended for heavily soiled clothes. It is recommended to use powder detergents to clean clay and soil stains and the stains that are sensitive to bleaches. Detergents which do not contain bleach should be used.	Liquid detergents suitable for colors and dark colors can be used at dosages recommended for heavily soiled clothes.	Prefer liquid detergents produced for delicate clothes. Woolen and silk clothes must be washed with special woolen detergents.
	Normally Soiled (For example, stains caused by body oils on collars and cuffs)	Powder detergents are recommended for cleaning clay, soil stains, and stains sensitive to bleaches.	Powder and liquid detergents recommended for colors can be used at dosages recommended for normally soiled clothes. Detergents which do not contain bleach should be used.	Liquid detergents suitable for colors and dark colors can be used at dosages recommended for heavily soiled clothes.	Prefer liquid detergents produced for delicate clothes. Woolen and silk clothes must be washed with special woolen detergents.
	Lightly Soiled (No visible stains exist)	Powder and liquid detergents recommended for whites can be used at dosages recommended for lightly soiled clothes.	Powder and liquid detergents recommended for colors can be used at dosages recommended for lightly soiled clothes. Detergents which do not contain bleach should be used.	Liquid detergents suitable for colors and dark colors can be used at dosages recommended for lightly soiled clothes.	Prefer liquid detergents produced for delicate clothes. Woolen and silk clothes must be washed with special woolen detergents.

Detergent Recommendation:

Recommended washing detergent	Wash cycles	Washing temp.	Type of laundry and textile
Heavy-duty detergent with agents and optical brighteners	Cottons&Mixed &Bedding &Extra Dirty &Cottons 20 C &ECO40-60	30/40/60	White laundry made from boil-proof cotton or linen
Color detergent without bleaching agent and optical brighteners	Cottons&Mixed &Bedding &Extra Dirty &Cottons 20 C &Quick 15&Hygiene	20/30/40	Coloured laundry made from boil-proof cotton or linen
Color or mild detergent without optical brighteners	Mixed&Down Jacket &Quick 15 &Delicates	Cold/20/30/40	Coloured laundry made from easy care fibres or synthetic materials
Mild washing detergent	Silk&Down Jacket &Delicates	Cold/20/30	Delicate textiles, silk,viscose
Special wool detergent	wool	20/30/40	Wool

- Agglomerating or ropy detergent or additive can be diluted in some water before pouring them into the detergent dispenser to prevent blockage and potential water overflow.
- Please choose the appropriate type of detergent to achieve maximum washing performance with minimal water and energy consumption.
- Proper detergent dosing is crucial for achieving the best cleaning results. Use a reduced amount of detergent if the drum is not completely filled.
- Always adjust the detergent amount water is soft, use less detergent.
- Dose according to the level of dirtiness of your laundry; less soiled clothes require less detergent.
- Highly concentrated (compact) detergents require precise dosing.

Following symptoms are the sign of detergent overdosing:

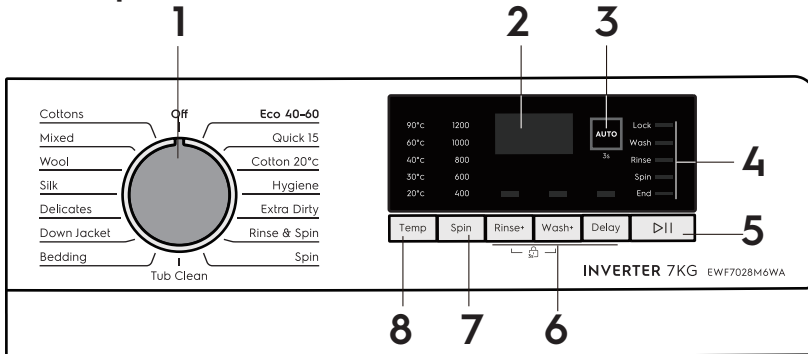
- heavy foam formation
- poor washing and rinsing result

Following symptoms are the sign of detergent underdosing:

- laundry turns grey
- built-up of limescale deposits on the drum, the heating element and/or the laundry

4. Operating the product

4.1 Control panel



- 1** Programme Selection knob (Uppermost position: On / Off)
- 2** Display
- 3** Auto Wash button
- 4** Programme Follow-up indicator

- 5** Start / Pause button
- 6** Auxiliary Function buttons
- 7** Spin Speed Adjustment button
- 8** Temperature Adjustment button

4.2 Preparing the machine

Make sure that the hoses are connected tightly. Plug in your machine. Turn the tap on completely. Place the laundry in the machine. Add detergent and fabric softener.

4.3 Programme selection

1. Select the programme suitable for the type, quantity and soiling degree of the laundry in accordance with the "Programme and consumption table" and the with temperature table below.

Temp	Soil level
90°C	Heavily soiled white cottons and linens. (coffee table covers, tableclothes, towels, bed sheets, etc.).

Temp	Soil level
60°C	Normally soiled, coloured, fade proof linens, cottons or synthetic clothes (shirt, nightgown, pajamas, etc.) and lightly soiled white linens (underwear, etc.).
40°C 30°C 20°C Cold	Blended laundry including delicate textile (veil curtains, etc.), synthetics and woolsens.

2. Select the desired programme with the Programme Selection button.

NOTE

- Programmes are limited to the highest spin speed appropriate for that particular type of fabric.
- When selecting a programme, always consider the type of fabric, color, degree of soiling, and permissible water temperature.
- Always select the lowest required temperature; higher temperatures mean higher power consumption.
- For further programme details, refer to the Programme and Consumption Table.

4.4 Program introduction

Depending on the type of fabric, use the following main programmes.

Cottons

Use this programme for your cotton laundry (such as bed sheets, duvet and pillowcase sets, towels, bathrobes, underwear, etc.). Your laundry will be washed with vigorous washing action for a longer washing cycle.

Down Jacket

The process for washing down jackets is specially designed. The material of down jackets is lightweight, difficult to rinse, has poor resistance to washing, and is hard to absorb water. Therefore, it's necessary to extend the soaking time during the washing process and reduce the rotation speed during dehydration.

Wool

Use this program to wash your woolen clothes. Select the appropriate temperature according to the care tags on your clothes. Use detergents specifically designed for woolen.

Bedding

The main items washed in this programme are bed sheets, quilt covers, curtains, overcoats, and tablecloths. During the washing process, soaking and washing times are increased to enhance washing effect.

Tub Clean

Periodically (every 1-2 months) use this program to clean the drum for necessary sanitation cleaning. Let the washing machine run the programme without any laundry. For better results,

add powdered limescale cleaning agent to the detergent box. After the program, leave the front door ajar and let the inside of the machine dry.

Extra Dirty

For the clothes with more stubborn stains, the washing effect can be improved by longer washing time and strong washing rhythm.

Delicates

You can use this programme to wash delicate laundry such as cotton/synthetic mix knitted clothes or socks.

Silk

You can choose this programme to wash delicate fabrics such as silk. The wash is very gentle, and the spin step is not done right away. This programme is best if the laundry requires a gentle wash.

Hygiene

Hygiene washing process is to produce steam in the washing process, improve the washing effect, and at the same time, steam iron the clothes to prevent wrinkles.

Quick 15

Quick wash 15 is a fast washing program for a small amount of non dirty clothes. Its optional washing temperature range is narrow and the maximum speed of dehydration is low.

Mixed

Use this programme to wash your cotton and synthetic clothes together without sorting them.

Cottons 20 °C

New European standard special program, used to wash some mild clothes, the temperature can only be selected at 20 °C, to protect the clothes.

ECO 40-60

For washing cotton garments that are normally washable at 40°C or 60°C, wash them together in the same cycle. This cycle is used to ensure compliance with EU eco design regulations.

For specific applications, select any of the following programmes.

Rinse+Spin

A programme designed for users to rinse and dehydrate.

Spin

Use this programme to apply an additional spin cycle for your laundry or to drain the water in the machine. Before selecting this programme, select the desired spin speed and press Start / Pause button.

NOTE

Use a lower spin speed for delicate laundries.

4.5 Temperature selection

Whenever a new programme is selected, the default temperature of the selected program is displayed in the temperature indicator. To adjust the temperature, press the temperature button. The temperature will gradually increase and cycle to the lowest when the maximum is reached.

NOTE

If you want to change the temperature after the program starts, you need to re-select the program to adjust the temperature while it is in the unlocked status.

4.6 Spin speed selection

Whenever a new programme is selected, the default dehydration speed of the selected program is displayed on the speed indicator. To adjust the dehydration speed, press the speed button. The rotation speed increases gradually and returns to the lowest setting when it reaches the highest.

4.7 Programme table

Programme; Temperature range	Default spin speed (rpm)	Max. load (Dry clothes)	Auxiliary function		
			Rinse+	Wash+	Delay
Mixed; Cold to 60°C	800	3.5 kg	■	■	■
Quick 15; Cold to 30°C	800	1 kg	■	■	■
Silk; Cold to 40°C	400	1.5 kg	■	■	■
Bedding; Cold to 60°C	800	3.5 kg	■	■	■
Delicates; Cold to 90°C	800	2 kg	■	■	■
Rinse+Spin;	800	Max	■		■
Spin	800	Max			■
ECO 40-60; 40°C	1200	Max			■
Extra Dirty; 40°C to 60°C	800	3.5 kg	■	■	■
Cottons; Cold to 90°C	800	Max	■	■	■
Down Jacket; Cold to 40°C	600	2 kg	■	■	■
Wool; Cold to 40°C	400	1.5 kg	■	■	■
Hygiene; 90°C	800	3.5 kg	■	■	■
Cottons 20 C; 20°C	800	Max	■	■	■
Tub Clean; 90°C	800	-		■	■
AUTO; Auto	800	Max			

■ : Selectable

* : Automatically selected, no canceling.

During certain programmes, the washer will detect the balance status to adjust the spin speed automatically, ensuring machine stability.

4.8 Auxiliary function selection

Select the desired auxiliary functions before starting the programme. Additionally, you can select or cancel auxiliary functions suitable for the current program without pressing the Start/Pause button while the machine is operating. To do this, the machine must be in a step before the auxiliary function you intend to select or cancel. If the auxiliary function cannot be selected or canceled, the light of the relevant auxiliary function will blink three times to warn the user.

Wash+

In standby mode, press the enhanced washing function setting button. The Strengthen Washing Function indicator will illuminate, and the Strengthen Washing Function will be incorporated into the washing process. Upon selecting the Strengthen Washing Function, the washing time during the main washing stage will increase by 10 minutes, and the updated time will be displayed in the remaining time window. Pressing the button again will cancel the Strengthen Washing Function.

Rinse+

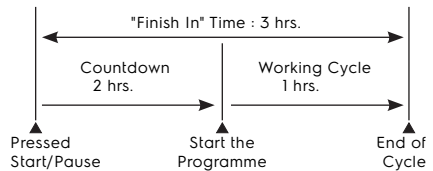
To activate the Rinse Plus function, press the Rinse Plus button while in standby mode; the Rinse Plus indicator will illuminate. This adds an extra rinse cycle during the washing process, and the added time will be displayed in the remaining time window. To cancel the Rinse Plus function, press the Rinse Plus button again. If the rinse cycle has not started during operation, press the Pause button. The Rinse Plus function can then be added or cancelled. Note that the Rinse Plus function cannot be selected or cancelled during operation.

AUTO

Press the AUTO button for 3 seconds until the display light turns on and the AUTO program starts. The AUTO programme is an intelligent feature that operates automatically in both standby and power-off states. In the AUTO programme, washing temperature, water level, and washing time are set automatically based on the weight sensing results, eliminating the need for user input.

Delay End

The Delay End function allows you to postpone the start of the programme by up to 24 hours. The Delay End time can be adjusted in 1-hour increments.



i NOTE

Do not use liquid detergents when you set Delay End! There is the risk of staining of the clothes.

Open the loading door and place the laundry inside. Add detergent and any other required items. Select the washing program, temperature, spin speed, and optional auxiliary functions. Use the Delay button to set the desired start time. Press the Start/Pause button to begin the cycle. The delay Pause button to begin the cycle. The delay the countdown will commence. The ' ' symbol next to the delay end time will move up and down on the display.

i NOTE

Additional laundry may be loaded during the delay end period.

At the end of the countdown, duration of the selected programme will be displayed. " _ "symbol will disappear and the selected programme will start.

Canceling the Delay End function

If you want to cancel the delay end countdown and start the programme immediately:

Set the Delay End period to zero or turn the Programme Selection knob to any programme. This action will cancel the Delay End function, indicated by the continuous flashing of the End/Cancel light. Then, select the desired programme again. Press the Start/Pause button to initiate the programme.

4.9 Starting the programme

Press Start/Pause button to start the programme. Programme follow-up light showing the startup of the programme will turn on.

i NOTE

If no programme is started or no key is pressed within 10 minute during programme selection process, the machine will switch to turn off mode and the temperature, speed and other lights will turn off.

4.10 Child Lock

Use Child Lock function to prevent children from tampering with the machine. Thus you can avoid any changes in the running programme.

i NOTE

- If the Programme Selection knob is turned while the Child Lock is active, "CL" appears on the display. The Child Lock does not allow any change in the programmes and the selected temperature, speed and auxiliary functions.
- If another program is selected using the Programme Selection knob while the Child Lock is active, the previously selected program will continue to run.

To activate the Child Lock:

Press and hold 1st(Rinse+) and 2nd(Wash+) Auxiliary Function buttons for 3 seconds while any programme is running. The Child Lock is activated. If you press any button or turn the Programme Selection knob when the Child Lock is active, "CL" will appear on the display.

To deactivate the Child Lock:

Press and hold 1st(Rinse+) and 2nd(Wash+) auxiliary function buttons for 3 seconds while any programme is running. The Child Lock is deactivated.

i NOTE

- In addition to the method above, to deactivate the Child Lock, switch the Programme Selection knob to the On/Off position when no program is running, and then select another programme.
- Child Lock is not deactivated after power failures or when the machine is unplugged.

4.11 Progress of programme

The progress of a running program can be monitored using the Programme Follow-up indicator. At the beginning of each program step, the corresponding indicator light will turn on, and the light for the completed step will turn off. If you wish to change auxiliary functions, speed, or temperature settings, you need to press the Start/Pause button before making any changes to the program. Ensure that any changes made occur during a step that follows the current running program step.

i NOTE

If the machine does not proceed to the spin cycle, it may activate the unbalanced loading detection system automatically due to uneven distribution of laundry inside the drum. This system adjusts the distribution of laundry by rotating the drum.

4.12 Loading door lock

There is a locking system on the loading door of the machine that prevents opening the door when the water level is unsuitable.

The Loading Door light will start flashing when the machine is switched to Pause mode. The machine checks the water level inside. If the level is suitable, the Loading Door light will illuminate steadily within 1-2 minutes, and the loading door can be opened.

If the water level is unsuitable, the Loading Door light turns off, and the loading door cannot be opened. If you need to open the Loading Door while the light is off, you have to cancel the current programme; see "Canceling the programme".

4.13 Changing the selections after programme has started

Switching the machine to pause mode

Press the Start/Pause button to switch the machine to Pause mode while a programme is running. The light of the current step the machine is in will start flashing in the Programme Follow-up indicator, indicating that the machine is in Pause mode. Additionally, when the loading door can be opened, the Loading Door light will also illuminate continuously, in addition to the programme step light.

Changing the speed and temperature settings for auxiliary functions

Depending on the current step of the program, you can either cancel or activate auxiliary functions. Refer to "Auxiliary function selection" for details. Additionally, you can adjust the spin speed and temperature settings. See "Spin speed selection" and "Temperature selection" for more information.

i NOTE

If no change is allowed, the relevant light will flash 3 times.

Adding or taking out laundry

Press the Start/Pause button to switch the machine to Pause mode. The Programme Follow-up light for the current step during which the machine was paused will flash. Wait until the Loading Door can be opened. Open the Loading Door to add or remove laundry, then close it. Make any necessary changes to auxiliary functions, temperature, and speed settings. Press the Start/Pause button again to resume the programme.

4.14 Canceling the programme

To cancel the programme, press the Start/Pause button first. Then, turn the Programme Selection knob to choose another programme. The previous programme will be canceled. The End/Cancel light will flash continuously to indicate that the programme has been canceled. The pump function is activated for 1-2 minutes regardless of the programme step or the presence of water in the machine. After this period, your machine will be ready to start the new programme from its first step.

i NOTE

Depending on the step at which the programme was canceled, you may need to add detergent and softener again for the new programme you have selected.

4.16 End of the programme

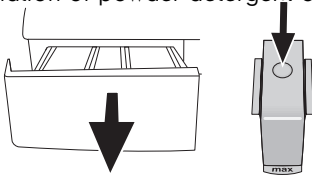
"End" appears on the display at the end of the programme. Wait until the loading door light illuminates steadily. Press On /Off button to switch off the machine. Take out your laundry and close the loading door. Your machine is ready for the next washing cycle.

5 Maintenance and cleaning

The service life of the product extends, and the frequency of common problems decreases when cleaned at regular intervals.

5.1 Cleaning the detergent drawer

Clean the detergent drawer at regular intervals (every 4-5 washing cycles) as shown below in order to prevent accumulation of powder detergent over time.



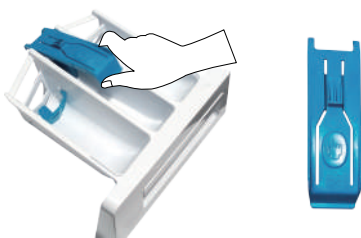
- 1 Press the dotted point on the siphon in the softener compartment and pull towards you until the compartment is removed from the machine.

i NOTE

If an excessive amount of water and softener mixture begins to collect in the softener compartment, the siphon should be cleaned.

- 2 Wash the detergent drawer and the siphon with plenty of lukewarm water in a washbasin. Wear protective gloves or use an appropriate brush to avoid touching of the residues in the drawer with your skin when cleaning.
- 3 Insert the drawer back into its place after cleaning and make sure that it is seated well.

If your detergent drawer is the one indicated in the following figure:



i NOTE

Lift the rear part of the siphon to remove it as illustrated. After performing the above mentioned cleaning procedures, replace the siphon back to its seating and push its front section downwards to make sure that the locking tab engages.

5.2 Cleaning the loading door and the drum

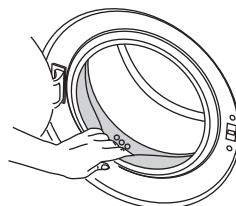
For products with drum cleaning programme, please see operating the product programmes.

Please confirm that there is no laundry in the drum before selecting the drum cleaning program, and no other key operation is needed after selecting. Before starting the programme, put 1 pouch of special drum cleaning agent (if the special agent could not be supplied, put max. 100 g of powder anti-limescale) into the main wash detergent compartment (compartment no. "2"). If the anti-limescale is in tablet form, place only one tablet into the main wash compartment no. '2'. After the programme has finished, dry the inside of the bellow with a clean cloth.

i NOTE

- Repeat Drum Cleaning process every 2 months.
- Use an anti-limescale suitable for the washing machines.

After every wash ensure that no foreign substance is left in the drum.



If the holes on the bellow, as shown in the figure, are blocked, use a toothpick to open them.

i NOTE

Foreign metal substances can cause rust stains in the drum. Clean these stains from the drum surface using cleaning agents suitable for stainless steel. Never use steel wool or wire wool.

! WARNING!

Never use sponges or scrubbing materials as they can damage painted and plastic surfaces.

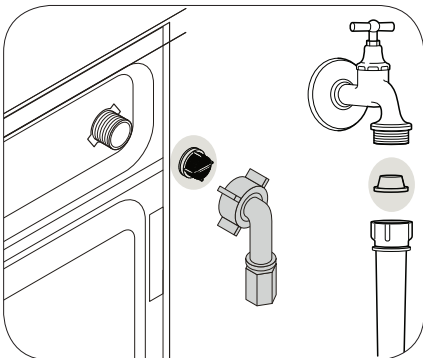
5.3 Cleaning the body and control panel

Wipe the body of the machine with soapy water or non-corrosive mild gel detergents as necessary, and dry with a soft cloth.

Use only a soft and damp cloth to clean the control panel.

5.4 Cleaning the water intake filters

There is a filter at the end of each water intake valve at the rear of the machine, and also at the end of each water intake hose where they connect to the tap. These filters prevent foreign substances and dirt from entering the washing machine. Clean the filters regularly as they can become dirty.



- 1 Close the taps.
- 2 Remove the nuts of the water intake hoses to access the filters on the water intake valves. Clean them with an appropriate brush. If the filters are too dirty, take them out by means of pliers and clean them.
- 3 Take out the filters on the flat ends of the water intake hoses together with the gaskets and clean thoroughly under running water.
- 4 Replace the gaskets and filters carefully in their places and tighten the hose nuts by hand.

5.5 Draining remaining water and cleaning the pump filter

The filter system in your machine prevents solid items such as buttons, coins and fabric fibers clogging the pump impeller during discharge of washing water. Thus, the water will be discharged without any problem and the service life of the pump will extend. If the machine fails to drain water, the pump filter is clogged. Filter must be cleaned whenever it is clogged or at least every 3 months. Water must be drained off first to clean the pump filter. In addition, prior to transporting the machine (e.g., when moving to another house) and in case of freezing of the water, water may have to be drained completely.

! WARNING!

Foreign substances left in the pump filter may damage your machine or may cause noise problem.

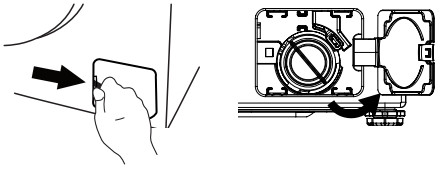
In order to clean the dirty filter and discharge the water:

1. Unplug the machine to cut off the supply power.

! WARNING!

Temperature of the water inside the machine may rise up to 90 °C. To avoid burning risk, filter must be cleaned after the water in the machine cools down.

2. Push the hook of filter cap to right side and pull out the filter cap

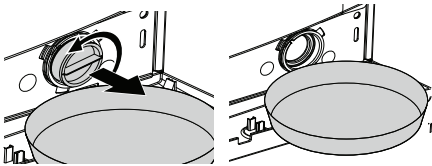


i NOTE

To remove the filter cover, gently push downwards using a thin plastic-tipped tool through the gap above the cover. Avoid using metal-tipped tools for this.

3. Some of our products have emergency draining hose and some does not have. Follow the steps below to discharge the water.

Discharge the water when the product does not have an emergency draining hose:



- a Place a large container in front of the filter to catch water from the filter.
 - b Loosen pump filter (anticlockwise) until water starts to flow. Fill the flowing water into the container you have placed in front of the filter.
 - c Always keep a piece of cloth handy to absorb any spilled water. When the water inside the machine is finished, take out the filter completely by turning it.
- 4 Clean any residues inside the filter as well as fibers, if any, around the pump impeller region.
 - 5 Install the filter.
 - 6 If the filter cap is composed of two pieces, close the filter cap by pressing on the tab. If it is a single piece, first seat the tabs in the lower part into their places, then press the upper part to close it.

5.6 Periodic cleaning schedule



WARNING!
Refer to Safety chapters.

Periodic cleaning helps to extend the life of your appliance.

After each cycle, keep the door and the detergent dispenser slightly ajar to get air circulation and dry the humidity inside the appliance: this will prevent mildew and odours.

If the appliance is not used for a long time: close the water tap and unplug the appliance

Indicative periodic cleaning schedule:

Descaling	Twice a year
Maintenance wash	Once a month
Clean door seal	Every two months
Clean drum	Every two months
Clean detergent dispenser	Every two months
Clean drain pump filter	Twice a year

5.7 Descaling

i NOTE

If the water hardness in your area is high or moderate, we recommend that you use a water descaling product for washing machines.

Regularly examine the drum to check for limescale.

The regular detergents already contain water softening agents, but we recommend to run a cycle with empty drum and a descaling product occasionally.

6 Technical specifications

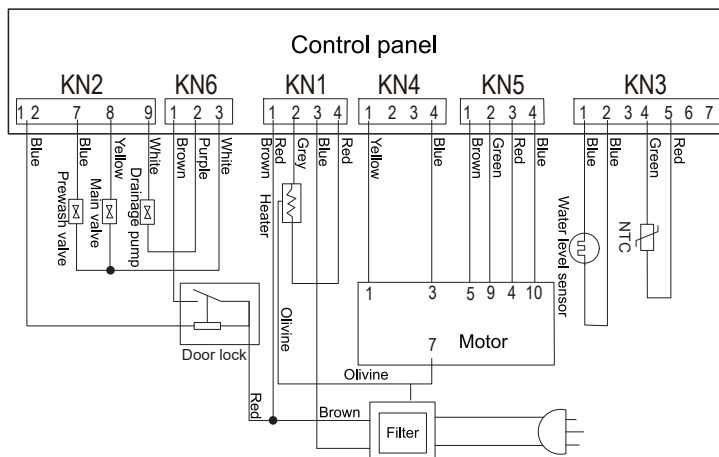
Model name	EWF7028M6WA
Capacity (kg)	7
Maximum spin speed (rpm)	1200
Height (cm)	84
Width (cm)	60
Depth (cm)	50
Net weight (±4 kg)	58
Input(V/Hz) total	220 - 240 V~/ 50 Hz

• Common programmes

These values are indicative only.

EWF7028M6WA				
Cycle	Nominal capacity in kg	Temperature Setting	Highest Temperature °C	Cycle Duration in Hours and Minutes
AUTO	Max.	30 °C	30 °C	0:55
Cottons	Max.	40 °C	90 °C	0:58
Mixed	3.5	30 °C	60 °C	0:52
Wool	1.5	30 °C	40 °C	1:00
Silk	1.5	Cold	40 °C	0:47
Delicates	2	40 °C	90 °C	0:59
Down Jacket	2	30 °C	40 °C	0:57
Bedding	3.5	30 °C	60 °C	1:15
Tub Clean	0	90 °C	90 °C	1:28
Spin	Max.	-	-	0:10
Rinse+Spin	Max.	-	-	0:17
Extra Dirty	3.5	60 °C	60 °C	1:17
Hygiene	3.5	90 °C	90 °C	1:58
Cottons 20 °C	Max.	20 °C	20 °C	0:50
Quick 15	1	Cold	30 °C	0:15
ECO 40-60	Max.	40 °C	40 °C	3:28

WIRING DIAGRAM



7 TROUBLESHOOTING

Malfunction	Possible cause	Solution
Programme does not start after closing the door.	Start/Pause/Cancel button was not pressed.	Press the Start/Pause/Cancel button.
Programme cannot be started or selected.	Washing machine has switched to self protection mode due to a supply problem (line voltage, water pressure, etc.).	To cancel the programme, turn the Programme Selection knob to select another programme. Previous programme will be cancelled. (See "Canceling the programme")
Water in the machine.	Some water might have remained in the product due to the quality control processes in the production.	This is not a failure; water is not harmful to the machine.
Machine vibrates or makes noise.	Machine might be standing unbalanced.	Adjust the feet to level the machine.
	A hard substance might have entered into the pump filter.	Clean the pump filter.
	Transportation safety bolts are not removed.	Remove the transportation safety bolts.
	Laundry quantity in the machine might be too little.	Add more laundry to the machine.
	Machine might be overloaded with laundry.	Take out some of the laundry from the machine or distribute the load by hand to balance it homogenously in the machine.
Machine stopped shortly after the programme started.	Machine might be leaning on a rigid item.	Make sure that the machine is not leaning on anything.
	When the user voltage (from 65V to 20V) appears more than 10S.	When this phenomenon occurs, the washing machine is in a safe state and should return to normal after being plugged back in (after more than 10 seconds).

Malfunction	Possible cause	Solution
Programme time does not countdown. (On models with display)	Timer may stop during water intake.	The timer indicator will not start counting down until the machine has taken in an adequate amount of water. The machine will wait until there is enough water to ensure proper washing results. The timer indicator will resume counting down after this.
	Timer may stop during heating step.	Timer indicator will not countdown until the machine reaches the selected temperature.
	Timer may stop during spinning step.	Automatic unbalanced load detection system might be activated due to the unbalanced distribution of the laundry in the drum.
	The machine does not proceed to the spinning step if the laundry is unevenly distributed in the drum. This precaution prevents damage to the machine and its surroundings.	Laundry should be rearranged and re-spin.
Foam is overflowing from the detergent drawer.	Too much detergent is used.	Mix 1 tablespoonful softener and ½ l water and pour into the main wash compartment of the detergent drawer.
	Do not put detergent into the machine if it is unsuitable for the programmes and maximum loads indicated in the "Programme and consumption table".	When you use additional chemicals (stain removers, bleaches and etc.), reduce the amount of detergent.
Laundry remains wet at the end of the programme	Excessive foam may have occurred due to too much detergent usage, leading to the activation of the automatic foam absorption system.	Use recommended amount of detergent.
	The machine does not proceed to the spinning step if the laundry is unevenly distributed in the drum. This is to prevent damage to the machine and its surrounding environment.	Laundry should be rearranged and re-spin.

 **WARNING!**

If you cannot resolve the problem despite following the instructions in this section, please consult your dealer or an Authorized Service Agent. Never attempt to repair a nonfunctional product yourself.

7.1 Customer service

WARNING!

- Risk of electric shock
- To repair the appliance contact the Authorised Service Centre. Use original spare parts only.
- Please note that self-repair or non-professional repair can have safety consequences and might void the guarantee.
- Improper repair may void the warranty, and any resulting damages will not be covered.

Alarm code	Code interpretation	Troubleshoot and workaround
E 1	Abnormal water intake	1: Check whether the faucet is turned on; 2: Check whether the water pressure is too low or the water is stopped; 3: Check whether the water inlet pipe is twisted; After the investigation is completed,if it still appears, please contact the maintenance.
E 2	The door is not closed	1: Check whether the door is closed properly; 2: Check whether the clothes are pressed by the door; After the inspection is completed,if it still appears, please contact the maintenance.
E 3	Washing motor failure	Please restart after powering off. If the issue persists, please contact us for maintenance.
E 4	Abnormal drainage	1: Clean the drain valve filter; 2: Check whether the drain pipe is blocked; After the investigation, if it still occurs, please contact the maintenance.
E 5	Abnormal water level	After pressing the start button, it will automatically drain to the washing water level and continue to run; If the issue persists, please contact maintenance.
E x X is a number other than the above)	Other	Please restart after powering off. If the issue persists, please contact maintenance.

The following symptoms are not malfunctions of the washing machine:

State	Reason
There is water in the machine or in the drain when it is used for the first time.	This is residual water from factory performance testing.
No water is visible during washing.	Water-saving washing machine, the washing water level is under the visible surface of the door glass.
After spinning, the laundry was not completely spun dry.	Heavy clothes can cause excessive imbalance, triggering the washing machine's imbalance protection feature during dehydration, resulting in uneven drying. Avoid washing thick garments individually; instead, mix large and small items together.
The program runs longer than the displayed time.	During the washing process, factors such as water pressure, water absorption by clothing materials, and motor dehydration treatment may influence and adjust the washing time accordingly. This is a normal occurrence and does not affect the overall washing process.

.....

.....

.....

.....

.....

.....

.....

.....

.....

.....

.....

electrolux.com

G00xyz-001-A12345678