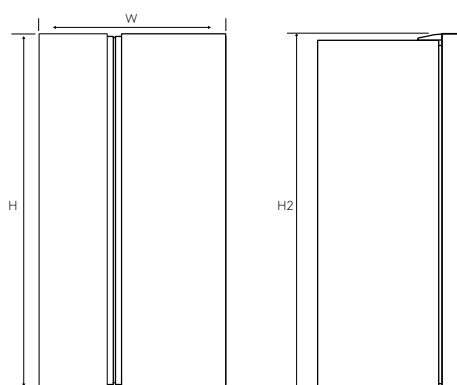


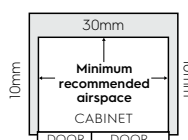
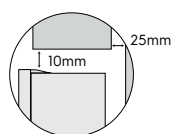
Dimension Guide

Side by side fridge

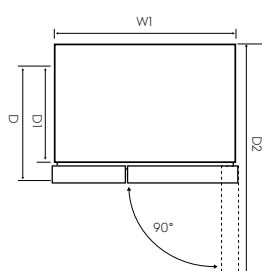
Models:
ESE6101A-B



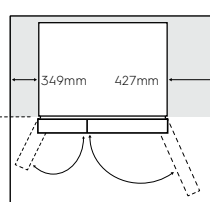
Minimum Recommended Airspaces



Please note: Doors are designed to sit proud of cabinetry (not flush)



Front face of bench aligned to front corner edge of cabinet.

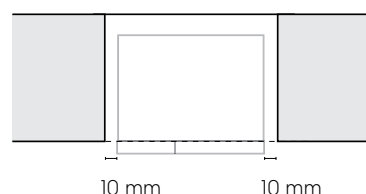


When positioned in a corner area, spacing of at least 310mm on the right hinge side and 219mm on the left hinge side will allow the doors to open enough to enable the removal of bins and shelves.

Installation options:

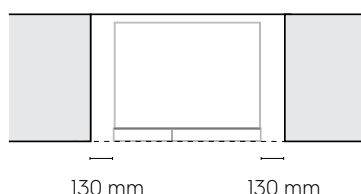
Front of fridge in line with kitchen cabinet

Side clearance must be 10mm either side of the fridge, to have the fridge doors siting proud of the kitchen cabinetry.



Fridge door flush with the cabinetry

Side clearance must be 130mm either side of the fridge, to have the fridge doors siting flush with the kitchen cabinetry.



Side by side models:	Door width (W)	Total depth (D)	Maximum height (H)	Cabinet width (W1)	Cabinet depth (D1)	Depth door open (D2)
ESE6101A-B	911	706	1780	908	624	1165

Important! Please ensure that the access to your kitchen (including doorways, corridors, island benches, etc) allows sufficient clearance to move your fridge into position.

Please note! Dimensions to be used as a guide only. All customers MUST refer to the user manual supplied with the product for detailed installation instructions.

© 2022 Electrolux Home Products Pty Ltd. E_DIM_ESE6101A-B_Jun22