

EFC925GAC
EFC924GA

EN Cooker Hood

instruction manual

CONTENTS

ENGLISH 3

Safety	3
Hood Description	5
Installation	9
Operation	12
Maintenance	13
Technical Specification	14
Customer Care Center	16



Environmental tip

Information on disposal for users

- Most of the packing materials are recyclable. Please dispose of those materials through your local recycling depot or by placing them in appropriate collection containers.
- If you wish to discard this product, please contact your local authorities and ask for the correct method of disposal.

RoHS Compliant.

If at any time in future you need to dispose of this product please do NOT dispose of this product with household waste. Please send this product to collecting points where available.

This product is RoHS compliant.

IMPORTANT SAFETY INSTRUCTION

INSTALLATION

- The manufacturer will not be held liable for any damages resulting from incorrect or improper installation.
- Please read this instruction manual before installing and using this cooker hood. Properly keep this instruction manual in a safe place for future reference.
- This cooker hood only be used in the Ducted Mode (ducting fumes to the outside).
- Only a qualified and trained service technician can undertake the work of installation and servicing.
- Check that the mains voltage corresponds to the one indicated on the rating plate fixed inside the hood.
- Check that the domestic power supply guarantees adequate earthing.
- Do not connect the hood to exhaust ducts carrying combustion fumes (boilers, fireplaces, etc.)
- If the hood is used in conjunction with non-electrical appliances (e. g. gas burning appliances), a sufficient degree of ventilation must be guaranteed in the room in order to prevent the backflow of exhaust gas. The kitchen must have an opening directly with the open air in order to guarantee the entry of clean air.
- The minimum distance is 750mm from the cooker hood to a gas hob, and is 650mm to an electric hob. If the installation instructions for gas/electric hobs specify a greater distance, this must be taken into account

NOTICE: Considering excessive weight, two or more people are required to install or move this appliance. Failure to do so can cause physical injuries.

USE

- The cooker hood has been designed only for domestic use to eliminate kitchen fumes.
- Never use the hood for purposes other than what it has been designed for.
- Never leave high naked flames under the hood when it is in operation.
- Adjust the flame intensity to direct it onto the bottom of the pan only; making sure that it does not engulf the pan sides.
- Deep fat fryer must be continuously monitored during use: overheated oil can burst into flame.
- The hood should not be used by children or person not instructed in its correct use
- If the supply cord is damaged, it must be replaced by the manufacturer, its service agent or similarly qualified persons in order to avoid a hazard.

MAINTENANCE

- Proper maintenance of the Range Hood will assure proper performance of the unit.
- Disconnect the hood from the main supply before carrying out any maintenance work.
- Clean and/or replace aluminum grease filters and activated charcoal filters after specified period of time. (More details please see page13.)
- Clean the hood using a damp cloth and a neutral liquid detergent.
- DISPOSAL: Do not dispose this product as unsorted municipal waste. Collection of such waste separately for special treatment is necessary.

WARNING!!

In certain circumstances electrical appliances may be a danger hazard.

- Do not check the status of the filters while the cooker hood is operating.
- Do not touch the light bulbs after appliance use.
- Do not disconnect the appliance with wet hands.
- Avoid free flame, as it is damaging for the filters and a fire hazard.
- Constantly check food frying to avoid that the overheated oil may become a fire hazard.
- Disconnect the electrical plug prior to any maintenance.
- Children don't recognize the risks of electrical appliances. Therefore use or keep the appliance only under supervision of adults and out of the reach from children.
- Don't use this product outdoor.
- -This appliance can be used by children aged from 8 years and above and persons with reduced physical, sensory or mental capabilities or lack of experience and knowledge if they have been given supervision or instruction concerning use of the appliance in a safe way and understand the hazards involved. Children shall not play with the appliance. Cleaning and user maintenance shall not be made by children without supervision.
- This appliance is not intended for use by persons (including children) with reduced physical, sensory or mental capabilities, or lack of experience and knowledge, unless they have been given supervision or instruction concerning use of the appliance by a person responsible for their safety. Children should be supervised to ensure that they do not play with the appliance.
- There shall be adequate ventilation of the room when the range hood is used at the same time as appliances burning gas or other fuels.
- There is a fire risk if cleaning is not carried out in accordance with instructions.
- Do not flambe under the range hood.
- The discharge air must not be discharged into a flue which is used for exhausting fumes from appliances burning gas or other fuels.

CAUTION: Accessible parts may become hot when used with cooking appliances.

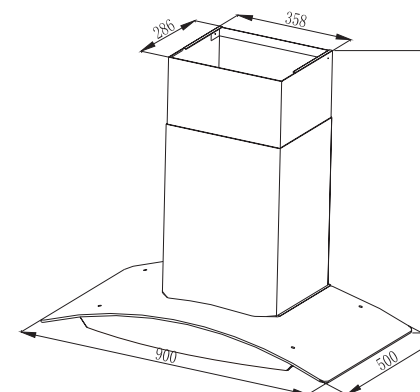
The available lamps and the correspondence ILCOS D codes and lamp pictures:

Use type lamp (or use in alternative type lamp) DSR-2-S-70 (ILCOS D code in according to standard IEC 61231).

- Self-ballasted fluorescent reflector lamp – Integral induction type ballast
- Max wattage: 2 W
- Voltage range: 12 V
- Dimensions: diameter 70 mm
- Pictures:

**HOOD DESCRIPTION**

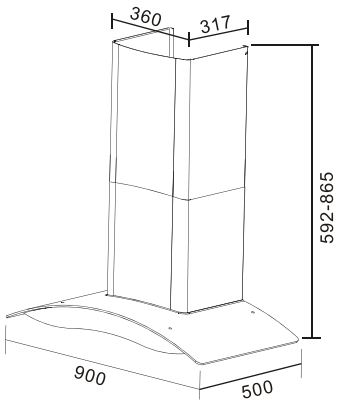
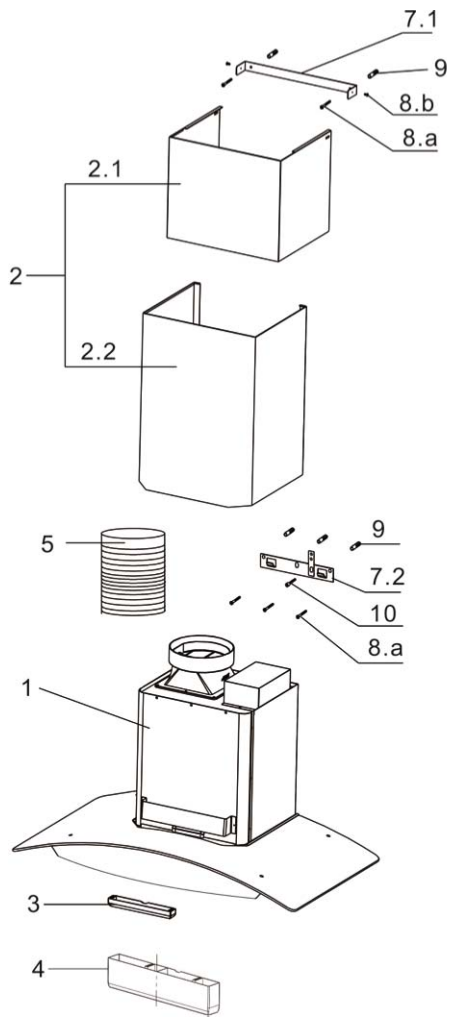
EFC925GAC



Ref	Q'ty	Product Components
1	1pc	Hood body, complete with: controls, lights, blower, filters, air outlet adapter, Damper
2	1set	Telescopic Chimney comprising
2.1	1pc	Decorative Chimney Top
2.2	1pc	Decorative Chimney Bottom
3	1pc	Oil cup
4	1pc	Water cup
5	1pc	Aluminum Exhaust Duct
6	1pc	Wall or Roof Cap (source locally, not supplied)

Ref	Q'ty	Product Components
7.1	1pc	Chimney Mounting Bracket
7.2	1pc	Hood Mounting Bracket
8.a	5pcs	Mounting Screws (ST 5 X)
8.b	2pcs	Chimney Mounting Bracket Screws (ST 4 X)
9	5pcs	Drywall Anchors
10	1pc	Hood mounting bracket fixing screws(M4 X)

Ref	Q'ty	Product Components
11	1pc	Instruction Manual



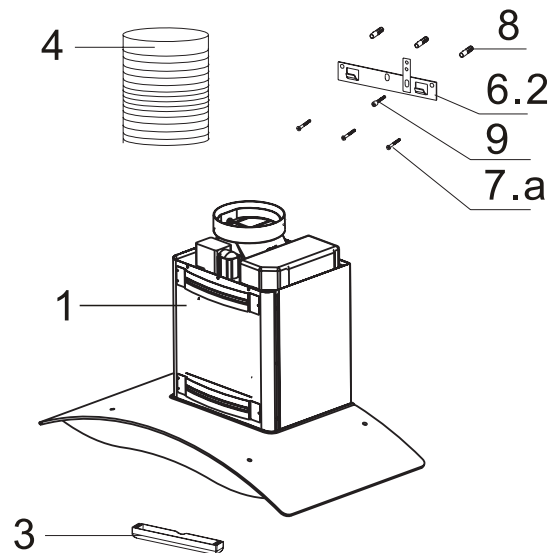
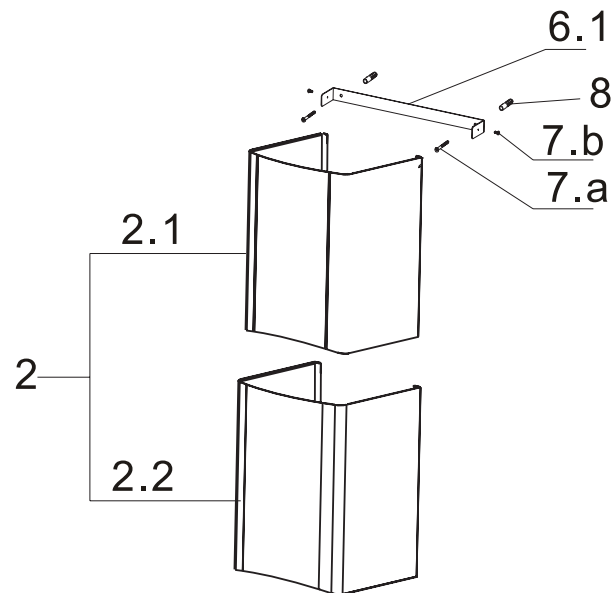
HOOD DESCRIPTION

EFC924GA

Ref	Q'ty	Product Components
1	1pc	Hood body, complete with: controls, lights, blower, filters, air outlet adapter, Damper
2	1set	Telescopic Chimney comprising
2.1	1pc	Decorative Chimney Top
2.2	1pc	Decorative Chimney Bottom
3	1pc	Oil cup
4	1pc	Aluminum Exhaust Duct
5	1pc	Wall or Roof Cap (source locally, not supplied)

Ref	Q'ty	Product Components
7.1	1pc	Chimney Mounting Bracket
7.2	1pc	Hood Mounting Bracket
8.a	5pcs	Mounting Screws (ST 5 X)
8.b	2pcs	Chimney Mounting Bracket Screws (ST 4 X)
9	5pcs	Drywall Anchors
10	1pc	Hood mounting bracket fixing screws(M4 X)

Ref	Q'ty	Product Components
11	1pc	Instruction Manual



INSTALLATION

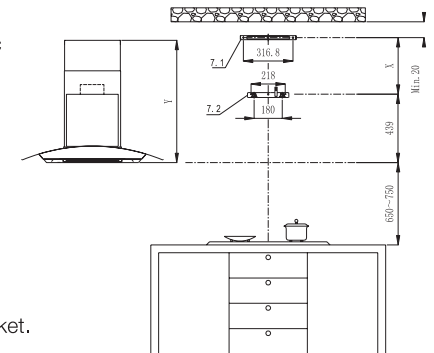
Note 1 :Carefully remove the plastic protective film from chimney and front panel prior to final installation.

Note 2: At least two people will be required to mount the hood.

WALL DRILLING AND BRACKETS FIXING (X=Y-439)

Draw a vertical line on the supporting wall up to the ceiling, or as high as practical, at the centre of the area in which the hood will be installed.

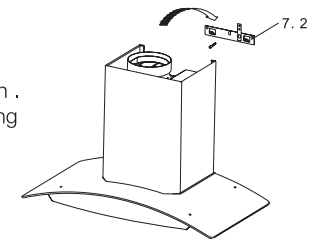
- Draw a horizontal line at 650mm above the electric hob or 750mm above the gas hob.
- Place one of chimney mounting brackets 7.1 on the wall as shown min. 20mm from the ceiling or upper limit aligning the centre (notch) with the vertical reference line.
- Mark the wall at the centre of the holes in the bracket.
- Place the hood mounting bracket 7.2 on the wall as shown aligning the central notches to the vertical reference line.
- Mark the wall at the centre of the holes in the bracket.
- Drill $\phi 10$ mm holes at all the centre points marked.
- Fix the two brackets using the mounting screws and drywall anchors.



MOUNTING THE HOOD BODY

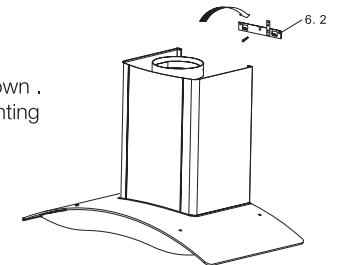
EFC925GAC

Hook the body onto the hood mounting bracket 7.2 as shown . Balance the hood body by slightly adjusting the hood mounting bracket. Gently lower the hood until it securely engages the bracket.



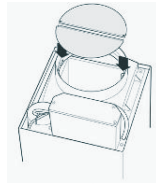
EFC924GA

Hook the body onto the hood mounting bracket 6.2 as shown . Balance the hood body by slightly adjusting the hood mounting bracket. Gently lower the hood until it securely engages the bracket.



DAMPER (FLAPS) FIXING

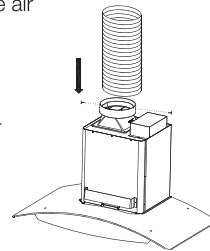
- Fix the damper (flaps) into the air outlet adapter.
- To be sure that the damper (flaps) is locked well on the air outlet adapter, it should be flexible in opening and closing.

**DUCT FIXING**

Caution: To reduce the risk of fire, use metal ductwork only.

Attach an adequate length of $\phi 160\text{mm}$ round duct into the recessed area of the air outlet adapter.

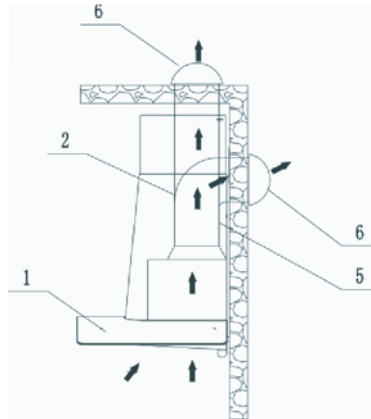
The duct have to be secured using two screws from two sides of the air outlet adapter. Make sure the duct is fixed well on

**DESCRIPTION/CONNECTIONS****Ducted mode air exhaust system**

The hood draws the cooking fumes saturated with fumes and odour through the grease filters and expels it to the outside through an outlet pipe.

Caution: To reduce the risk of fire, use metal ductwork only.

- Decide where the ductwork will run between the hood and the outside.
- A straight, short duct run will allow the hood to perform most efficiently.
- Long duct runs, elbows, and transitions will reduce the performance of the hood. Use as few of them as possible. Larger ducting may be required for best performance with longer duct runs.
- Attach an adequate length of $\phi 160\text{mm}$ round duct to the air outlet adapter.
- The air must not be discharge into a flue that is used for exhausting fumes from appliances burning gas or other fuels" "Regulations concerning the discharge of air have to be fulfilled.
- Install a roof/wall cap. Connect round metal ductwork to cap and work back towards hood location. Use duct tape to seal the joints between ductwork sections.



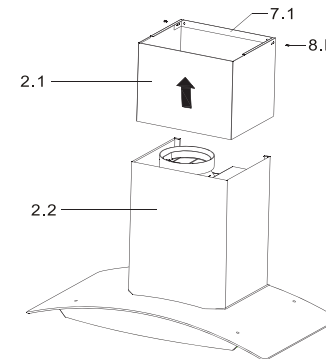
Warning: Failure to install the screws or fixing device in accordance With these instructions may result in electrical hazards.

Electrical Connection

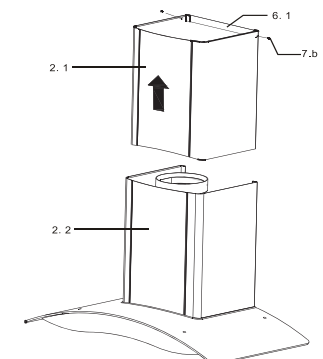
- Electrical wiring must be done by a qualified person(s) in accordance with all applicable codes and standards. Turn off electrical power at service entrance before wiring.
- Do not use the plug and an extension cord other than the ones initially supplied with the hood.
- The earthing of this hood is compulsory. Do not remove ground prong of the plug.

TELESCOPIC CHIMNEY COMPRISING ASSEMBLY EFC925GAC (EFC924GA)

Carefully slide the decorative chimney top 2.1 up inside the decorative chimney bottom 2.2. Secure decorative chimney top 2.1 to the chimney mounting bracket 7.1 (6.1) that is well fixed on the wall with the two chimney bracket screws 8.b (7.b) supplied from two sides.



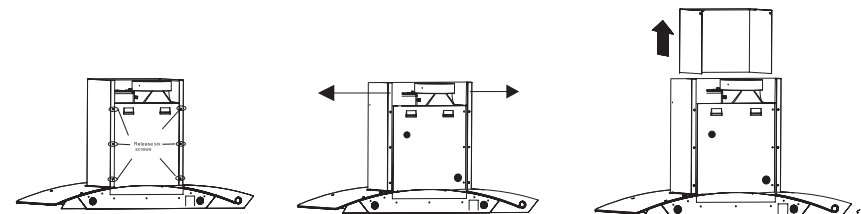
EFC925GAC



EFC924GA

Note: If find any difficulty to slide the decorative chimney top 2.1 up, pls follow below instruction:

- Release the six screws in the rear of hood as shown indicated.
- Pull the flange of chimney both outside as shown indicated.
- Slide the decorative chimney top 2.1 up in desired position.
- Tighten the six screws.



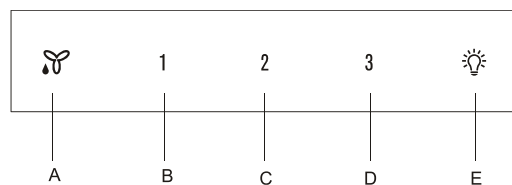
OPERATION

The hood is operated using the touch control switch on the front panel.

The light switch turns the lamps on and off.

The blower switch turns the blower on to three speed settings:

EFC925GAC



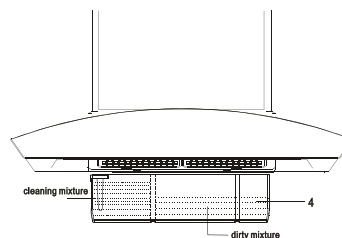
A – OFF/AUTO-CLEAN
B – LOW SPEED
C – MEDIUM SPEED
D – HIGH SPEED
E – LIGHT

Note: Press button **1** for 1 second to turn the fan speed off, if press it for 3 seconds, the hood will be set to water auto-clean function.

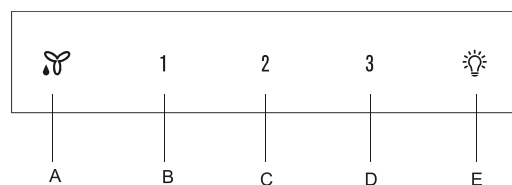
WATER AUTO-CLEAN FUNCTION

This appliance features self-clean function, for better clean the parts of inside, we recommend use self-clean function at every two months of operation, or more frequently for heavy use.

1. Full 80%-90% cleaning mixture (water + neutral detergent) into water cup and fix it to the hood.
2. Press button **1** for 3 seconds to start the self-clean function, the logo **1** will keep flashing until the process is completed.



EFC924GA

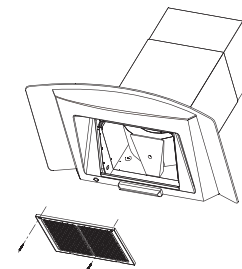


A – ON/OFF
B – LOW SPEED
C – MEDIUM SPEED
D – HIGH SPEED
E – LIGHT

MAINTENANCE

Switch off or unplug the appliance from the mains supply before carrying out any maintenance work. **GREASE FILTER**

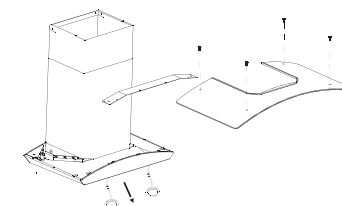
- The grease filters should be cleaned frequently (every two months of operation, or more frequently for heavy use). Use a warm detergent solution.
- Grease filters are washable. Remove the grease filter by unscrewing 2pcs screws. This will disengage the filter from the hood. Tilt the filter downward and remove. Wash the filters, taking care not to bend them. Allow them to be dry before refitting. To install the grease filter, push filter into position and release. Rescrew two screws. Make sure the filter is securely engaged after assembly.



LED LAMP

This range hood requires two LED lamp (12VDC, 2W Max)

- Remove the body glass, connection plate by unscrewing relative screws as indicated. Push out the LED lamp from inside, disconnect the terminal and replace.



WARNING:

- Always switch off the electrical supply before carrying out any operation on the appliance.
- Only a qualified and trained service technician can undertake the work of blubs replacement and servicing.

We recommend only using lamps of the same specification as the ones being replaced.
HOOD CLEANING

Glass and aluminium are two of the easiest materials to keep clean. Occasional care will help preserve its fine appearance.

Cleaning tips:

- Hot water with soap or detergent is all that is usually needed.
- Follow all cleaning by rinsing with clear water. Wipe dry with a clean, soft cloth to avoid water marks.
- For discolorations or deposits that persist, use a non-scratching household cleanser or stainless steel polishing powder with a little water and a soft cloth.
- For stubborn cases use a plastic scouring pad or soft bristle brush together with cleanser and water. Rub lightly in direction of polishing lines or "grain" of the aluminum finish. Avoid using too much pressure that may mar the surface.
- Do not allow deposits to remain for long periods of time.
- Do not use ordinary steel wool or steel brushes. Small bits of steel may adhere to the surface causing rust.
- Do not allow salt solutions, disinfectants, bleaches, or cleaning compounds to remain in contact with aluminum finish for extended periods. Many of these compounds contain chemicals that may be harmful. Rinse with water after exposure and wipe dry with a clean cloth.
- Painted surfaces should be cleaned with warm water and mild detergent only.

All parts & components must not be removed or replaced unless by qualified service personnel.

TECHNICAL SPECIFICATION

Model	EFC925GAC	EFC924GA
Rated Voltage	220-240 V~	220-240 V~
Rated Power Frequency	50 Hz	50 Hz
Light Power	2x2W, LED	2x2W, LED
Motor Power	200 W	200 W
Water auto-clean power	12 W	—
Total Power	216 W	204 W
Motor	1	1
Diameter of Exhaust Pipe	160 mm.	160 mm.
Dimension (mm)	L 900 x W 500 x H 590-860	L 900 x W 500 x H 592-865

Standard warranty conditions

We, Electrolux, undertake that if within 12 months of the date of the purchase this Electrolux appliance or any part thereof is proved to be defective by reason only of faulty workmanship or materials, we will, at our option repair or replace the same FREE OF CHARGE for labour, materials or carriage on condition that:

The appliance has been correctly installed and used only on the electricity supply stated on the rating plate.

The appliance has been used for normal domestic purposes only, and in accordance with the manufacturer instructions.

The appliance has not been serviced, maintained, repaired, taken apart or tampered with by any person not authorized by us.

All service work under this guarantee must be undertaken by an Electrolux Service Center.

Any appliance or defective part replaced shall become the Company property.

This warranty is in addition to your statutory and other legal rights.

This warranty does not include maintenance, like cleaning of hood.

The manufacturer waives all liability for failure to observe the instructions for the appropriate installation, maintenance and use of the appliance.

If you need any technical help or would like more information about our products, please do not hesitate to contact our Customer Care Center, listed below:

CUSTOMER CARE CENTER

Thailand Call Center Tel : (+66 2) 725 9000 Electrolux Thailand Co.,Ltd. Electrolux Building 14th Floor 1910 New Petchburi Road, Bangkapi,Huay Kwang, Bangkok 10310 Office Tel : (+66 2) 7259100 Office Fax : (+66 2) 7259299 Email : customercarethai@electrolux.com	Malaysia Domestic Toll Free : 1300-88-11-22 Electrolux Home Appliances Sdn. Bhd. Unit T2-7, 7th Floor, Tower 2 , Jaya33 Hyperoffice, No. 3, Jalan Semangat, Seksyen 13, 46100 Petaling Jaya, Selangor Office Tel : (+60 3) 7843 5999 Office Fax : (+60 3) 7955 5511 Email : malaysia.customercare@electrolux.com
Indonesia Hotline service: 08041119999 PT. Electrolux Indonesia Electrolux Building Jl.Abdul Muis No.34, Petojo Selatan, Gambir Jakarta Pusat 10160 Email:customercare@electrolux.co.id SMS & WA : 0812.8088.8863	Philippines Domestic Toll Free : 1-800-10-845-care 2273 Customer Care Hotline : (+63 2) 845 care 2273 Electrolux Phils Inc. 25th Floor, Equitable Bank Tower 8751 Paseo De Roxas, Makati City, 1226 Philippines Office Tel : (+63 2) 845 4510 Office TeleFax : (+63 2) 845 4543 Office Fax : (+63 2) 845 4548 Email : wecare@electrolux.com
Vietnam Domestic Toll Free : 1800-58-88-99 Tel : (+84 8) 3910 5465 Electrolux Vietnam Ltd. Floor 9th, A&B Tower 76 Le Lai street - Ben Thanh Ward - District 1 Ho Chi Minh City , Vietnam Office Tel : (+84 8) 3910 5465 Office Fax : (+84 8) 3910 5470 Email : vncare@electrolux.com	Singapore CUSTOMER CARE HOTLINE : (+65) 6507 8699 Electrolux S.E.A, Pte Ltd. 11 Lorong 3 Toa Payoh Jackson Square, Block B, #01-13/14/15 Singapore 319579 Office Tel : (+65) 6507 8900 Office Fax : (+65) 6356 5489 Email : customer-care.sin@electrolux.com.sg
Hongkong Tel: (+852) 8203 0298 Dah Chong Hong, Ltd. - Service Centre 8/F., Yee Lim Godown Block C 2-28 Kwai Lok Street, Kwai Chung, N.T. Hong Kong	

www.electrolux.com

The Thoughtful Design Innovator.

Do you remember the last time you opened a gift that made you say, "Oh! How did you know? That's exactly what I wanted!" That's the kind of feeling that we at Electrolux seek to evoke in everyone who chooses or uses one of our products. We devote time, knowledge, and a great deal of thought to anticipating and creating the kind of appliances that our customers really need and want.

This kind of thoughtful care means innovating with insight. Not design for design's sake, but design for the user's sake. For us, thoughtful design means making appliances easier to use and tasks more enjoyable to perform, freeing our customers to experience the ultimate 21st century luxury: ease of mind. Our aim is to make this ease of mind more available to more people in more parts of their everyday lives, all over the world.

The "Thinking of you" promise from Electrolux goes beyond meeting the needs of today's consumers. It also means we're committed to making appliances safe for the environment—now and for future generations.

Electrolux. Thinking of you.

Share more of our thinking at
www.electrolux.com