



Malaysia

Electrolux Home Appliances Sdn Bhd
Co. No. 198801008304 (175660-T)

address: Unit T2-L7, Level 7, Tower 2, PJ 33,
No. 3, Jalan Professor Khoo Kay Kim,
Seksyen 13, 46200 Petaling Jaya,
Selangor, Malaysia.

telephone: (+603) 7843 5999

fax: (+603) 7955 5511

website: electrolux.com.my

facebook: facebook.com/ElectroluxMalaysia

instagram: instagram.com/electroluxmy



CONSUMER CARE CENTRE

address: Lot C6, No. 28, Jalan 15/22,
Taman Perindustrian Tiong Nam,
Seksyen 15, 40200 Shah Alam,
Selangor Darul Ehsan, Malaysia.

hotline: 1300 88 1122

fax: (+603) 5524 2521

e-mail: malaysia.customercare@electrolux.com

Dealer's Stamp

Version: 2022-04



Refrigeration

Confidence to create
great taste





Our belief

We believe it's time for
a taste revolution.

By changing the way we source,
treat and eat food, we can
improve the effects on both our
health and our planet.
Even small changes in behavior
can make a big impact for
the better. Because few
things are more pleasurable than
sharing a delicious meal. That's
why we champion those who are
passionate about taste and want
to cook and enjoy more mindfully.

Swedish thinking.
Better living.

Refrigeration

Streamlined simplicity

A fridge should be a statement in your kitchen and Electrolux makes sure it's one of the most striking features in your kitchen. Ours are available in dark or natural stainless steel finishes for a seamless and elegant look.

Stylish and smart*

High quality, mark-resistant real stainless steel, now available in a new chic dark hue or classic bright stainless steel, lends a touch of class to any kitchen. Inside, the generous interior marries innovation and style in equal measure.

Power saver*

Electrolux continuously improve the energy of our appliances, raising the bar for product efficiency around the world.

Keep it cool*

The fridge door is one of the most opened in any household, which is why we came up with EvenTemp technology to help maintain the perfect temperature inside your fridge. It automatically detects when it needs to begin cooling, keeping the temperature down to lock the freshness in.

*Some features not available on all models.

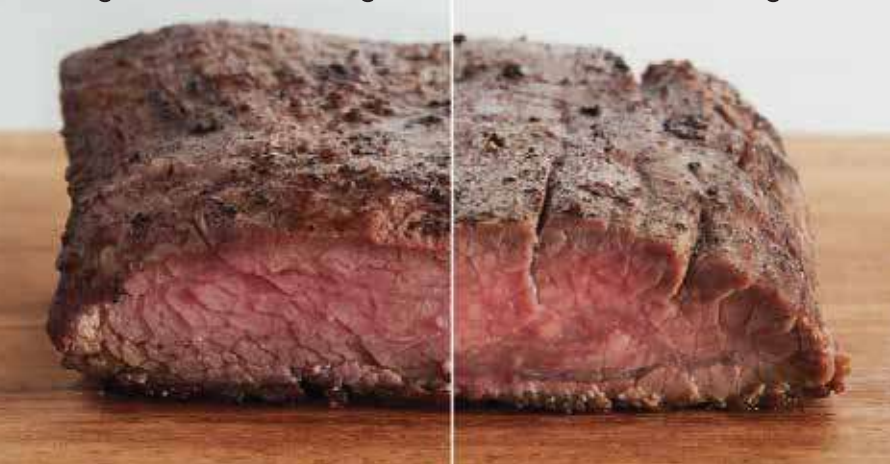


We protect food quality by delivering on the 3 key elements of preservation



Regular freezer storage

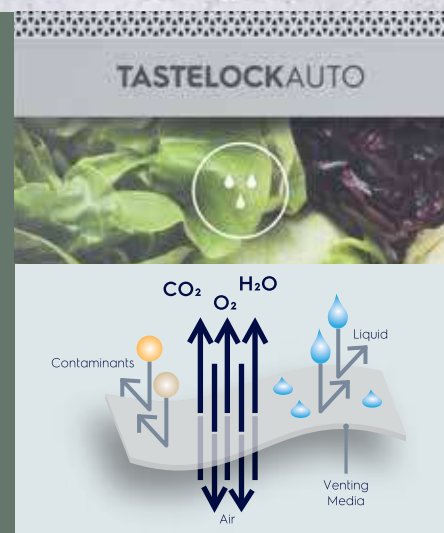
TasteSeal storage



Sealed environment

Tender meat and delicious seafood, always stored and cooked from fresh. The TasteSeal compartment maintains a consistent temperature of -2°C to keep your best ingredients in prime condition for up to 7 days* without freezing. This means that you can always cook from fresh to serve meat and seafood that is juicy in texture, bright in colour, and delicious in taste.

* Passed TUV Rheinland testing of microbiology plate count in salmon, chicken, and beef. Average weight loss <2% after 7 days. Sample tested EBB3702K.



Right humidity

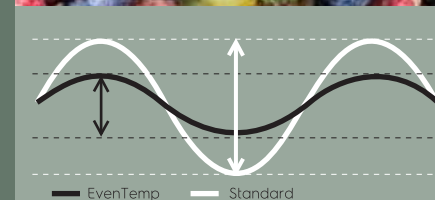
TasteLockAuto maintains a humid environment to keep fruits and vegetables fresh and bursting with flavour for up to 7 days.

This membrane is spun HDPE threads that are pressed to form a sheet which allows water vapor and gases to pass through



Stable temperature

EvenTemp keeps your food tasty for longer by minimising temperature fluctuations. By cooling each shelf individually, a consistent temperature is maintained throughout the entire compartment, preserving taste and texture for longer.





Multi-door features

Intuitive door design

With optimally split doors you have more usable space in your refrigerator door and can effortlessly reach for larger items, saving you the need to open both doors every time.

Fresh is best

Our innovative TasteLock crispers automatically control the humidity levels to keep your fruit and vegetables at their best for longer. While Easy-glide crisper drawers open effortlessly, even when they're full.

Thirst-quencher

Like a cool glass of pure, filtered water on cubed, or crushed ice? Your fridge is there to deliver, any time of the day or night – at the touch of a button. And you'll find the compact ice maker makes hot summer days or dinner parties a breeze.

Smart on space

The thoughtful Slide-back and Flip-up shelving means you can store that two-tiered birthday cake for the big moment, no problem.

SnackZone

The SnackZone is the ideal compartment for keeping those smaller ingredients separate for easy access such as fruit for your morning smoothie allowing you to be prepared before the week begins.

(Some features not available on all models.)



TasteLockAuto maintains a humid environment to keep fruit and vegetables fresh and bursting with flavour for up to 7 days. A membrane automatically releases excess moisture to reduce condensation and stop your produce from spoiling early.



TasteGuard deodoriser uses a carbon filter to keep your fridge fresh, hygienic, and free from unwanted odours that can change the taste and smell of your food



TwinTech Cooling consists of two independent cooling systems that work together to keep your fridge functioning at its best, every day. One system keeps your freezer chilled, while the other controls the refrigerator to keep temperature & humidity levels stable.



680L UltimateTaste 900
French Door Refrigerator

EQE6879A-B 680L

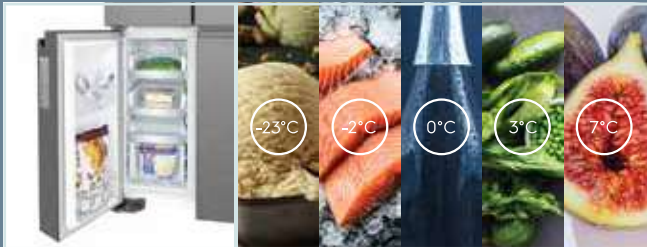
Overall dimensions

913W x 1782H x 749D (mm)

Features

- TasteSealFlex -23°C to 7°C
- TasteLockAuto
- TwinTech cooling
- WaterStream with AutoIce
- TasteGuard deodoriser
- NutriFresh inverter
- FlexStor

TasteSealFlex convertible compartment easily adapts to the temperature you need, giving you the freedom to store everything from fresh vegetables, to tender meat and fish, or cold drinks and ice-cream.



You can always find the right space to keep your food fresh and full of flavour by choosing one of the five temperature settings from -23°C to 7°C. You can even keep meat and fish fresh and tender for up to 7 days by storing at -2°C, avoiding the need for inconvenient defrosting.

600L UltimateTaste 700
French Door Refrigerator

EQE6000A-B 600L



Overall dimensions

896W x 1725H x 782D (mm)

Features

- TasteLockPlus
- EvenTemp
- TasteGuard deodoriser
- Twist and Serve ice maker
- FlexStor
- NutriFresh inverter
- QuickFreeze

363L UltimateTaste 300
Three Door Refrigerator

EME3700H-A 363L



Overall dimensions

598W x 1855H x 650D (mm)

Features

- TasteSealPlus -12°C to 3°C
- EvenTemp
- TasteGuard deodoriser
- TasteLock
- Twist and Serve ice maker
- FlexStor
- NutriFresh inverter



646L UltimateTaste 700
Side by Side Refrigerator

ESE6645A-BMY 646L

Overall dimensions

911W x 1780H x 746D (mm)

Features

- TasteLock
- TasteGuard deodoriser
- WaterStream
- NutriFresh inverter
- EvenTemp
- Twist and Serve ice maker
- QuickChill
- QuickFreeze
- Door alarm

606L UltimateTaste 700
Side by Side Refrigerator

ESE6141A-BMY 606L

Overall dimensions

911W x 1780H x 706D (mm)

Features

- TasteLock
- TasteGuard deodoriser
- WaterStream
- NutriFresh inverter
- EvenTemp
- Twist and Serve ice maker
- QuickChill
- QuickFreeze
- Door alarm



606L UltimateTaste 700
Side by Side Refrigerator

ESE6101A-BMY 606L

Overall dimensions

911W x 1780H x 706D (mm)

Features

- TasteLock
- TasteGuard deodoriser
- NutriFresh inverter
- EvenTemp
- Twist and Serve ice maker
- QuickChill
- QuickFreeze
- Door alarm



Top & bottom mount features

Fresh is best

Our innovative TasteLock crispers automatically control the humidity levels to keep your fruit and vegetables at their best for longer. While Easy-glide crisper drawers open effortlessly, even when they're full.

Increase the chill

With a combination of Fast Ice and Boost mode you will always be prepared when entertaining. After a large shop, Boost Mode increases the chill rate of the refrigerator for 90 minutes whilst the Fast Ice function lowers the freezer to -23°C for 12 hours, before returning to their preset temperatures, to ensure your produce stays fresher longer.

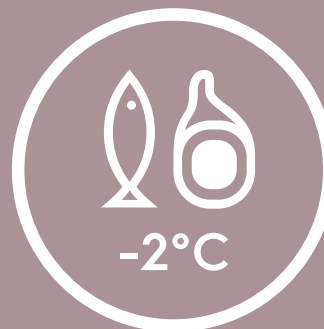
Keep it cool

The fridge door is one of the most opened in any household, which is why we came up with EvenTemp technology to help maintain the perfect temperature inside your fridge. It automatically detects when it needs to begin cooling, keeping the temperature down to lock the freshness in.

Designed just for you

Customise your fridge just the way you want it. FlexStor makes it simple to arrange the fridge to your needs with adjustable door bins and shelves. Different sized compartments effortlessly accommodate items big or small.

(Some features not available on all models.)



Fresh meat and fish, all week

Tender meat and delicious seafood, always stored and cooked from fresh. The TasteSeal compartment maintains a consistent temperature of -2°C to keep your best ingredients in prime condition for up to 7 days without deep freezing.



**460L - 536L UltimateTaste 500
Top Freezer Refrigerator**

- ETB5400B-A 536L ●
- ETB5400B-H 536L ●
- ETB4600B-A 460L ●


Overall dimensions

796W x 1725H x 723D (mm)

796W x 1725H x 723D (mm)

699W x 1725H x 723D (mm)


Features

- TasteLockPlus
- EvenTemp
- ChillRoom
- TasteGuard deodoriser
- FlexStor
- NutriFresh inverter
- Twist and Serve ice maker
- QuickChill

**331L - 360L UltimateTaste 300
Top Freezer Refrigerator**

- ETB3700K-A 360L ●
- ETB3400K-H 331L ●
- ETB3400K-A 331L ●


Overall dimensions

598W x 1755H x 650D (mm)

598W x 1645H x 650D (mm)

598W x 1645H x 650D (mm)


Features

- TasteSeal -2°C
- TasteLockAuto
- EvenTemp
- TasteGuard deodoriser
- TasteSeal metal tray
- Twist and Serve ice maker
- NutriFresh inverter

**331L - 360L UltimateTaste 300
Top Freezer Refrigerator**

- ETB3740K-H 360L ●
- ETB3440K-H 331L ●


Overall dimensions

598W x 1755H x 650D (mm)

598W x 1645H x 650D (mm)


Features

- TasteSeal -2°C
- TasteLockAuto
- WaterStream
- EvenTemp
- TasteGuard deodoriser
- TasteSeal metal tray
- Twist and Serve ice maker
- NutriFresh inverter

**230L - 275L UltimateTaste 300
Top Freezer Refrigerator**

- ETB2802J-A 275L ●
- ETB2502J-A 245L ●
- ETB2302J-A 230L ●


Overall dimensions

540W x 1605H x 615D (mm)

540W x 1470H x 615D (mm)

540W x 1405H x 615D (mm)


Features

- TasteSeal -2°C
- TasteLock
- EvenTemp
- TasteGuard deodoriser
- Twist and Serve ice maker
- NutriFresh inverter
- FlexStor

453L UltimateTaste 500
Bottom Freezer Refrigerator

EBE4500B-A 453L ●



Overall dimensions

699W x 1725H x 723D (mm)



Features

- TasteLockPlus
- EvenTemp
- Spacious freezer
- TasteGuard deodoriser
- FlexStor
- NutriFresh inverter
- Twist and Serve ice maker
- QuickFreeze

360L UltimateTaste 300
Bottom Freezer Refrigerator

EBB3702K-H 360L ●



Overall dimensions

598W x 1755H x 650D (mm)



Features

- TasteSeal -2°C
- TasteLockAuto
- EvenTemp
- TasteGuard deodoriser
- TasteSeal metal tray
- Twist and Serve ice maker
- Spacious Freezer
- NutriFresh inverter

360L UltimateTaste 300
Bottom Freezer Refrigerator

EBB3742K-A 360L ●



Overall dimensions

598W x 1755H x 650D (mm)



Features

- TasteSeal -2°C
- TasteLockAuto
- WaterStream
- EvenTemp
- TasteGuard deodoriser
- TasteSeal metal tray
- Twist and Serve ice maker
- Spacious Freezer
- NutriFresh inverter



top mount



ETB2302J-A ETB2502J-A ETB2802J-A ETB3400K-A ETB3400K-H ETB3440K-H ETB3700K-A ETB3740K-H ETB4600B-A ETB5400B-A ETB5400B-H

specifications											
gross capacity (litres)	230	245	275	331	331	331	360	360	460	536	536
net capacity (litres)	210	225	256	312	312	312	341	341	431	503	503
fridge / freezer (litres)	148 / 62	163 / 62	194 / 62	238 / 74	238 / 74	238 / 74	267 / 74	267 / 74	329 / 102	383 / 120	383 / 120
door colour	arctic silver	arctic silver	arctic silver	arctic silver	high gloss black	high gloss black	arctic silver	high gloss black	arctic silver	arctic silver	high gloss black
door alarm	yes	yes	yes	yes	yes	yes	yes	yes	yes	yes	yes
refrigerant	R600a	R600a	R600a	R600a	R600a	R600a	R600a	R600a	R600a	R600a	R600a
energy rating	5 star	5 star	5 star	5 star	5 star	5 star	5 star	5 star	4 star	4 star	4 star
fridge features											
chiller	TasteSeal	TasteSeal	TasteSeal	TasteSeal with metal tray	TasteSeal with metal tray	TasteSeal with metal tray	TasteSeal with metal tray	TasteSeal with metal tray	Chill room	Chill room	Chill room
crisper	TasteLock	TasteLock	TasteLock	TasteLockAuto	TasteLockAuto	TasteLockAuto	TasteLockAuto	TasteLockAuto	TasteLockPlus	TasteLockPlus	TasteLockPlus
cooling system	EvenTemp	EvenTemp	EvenTemp	EvenTemp	EvenTemp	EvenTemp	EvenTemp	EvenTemp	EvenTemp	EvenTemp	EvenTemp
inverter compressor	yes	yes	yes	yes	yes	yes	yes	yes	yes	yes	yes
water dispenser						4L tank		4L tank			
ice maker	Twist & serve	Twist & serve	Twist & serve	Twist & serve	Twist & serve	Twist & serve	Twist & serve	Twist & serve	Twist & serve	Twist & serve	Twist & serve
tasteguard	yes	yes	yes	yes	yes	yes	yes	yes	yes	yes	yes
flexstor	yes	yes	yes						yes	yes	yes
others											
product dimension (mm)	540W x 1405H x 615D	540W x 1470H x 615D	540W x 1605H x 615D	598W x 1645H x 650D	598W x 1645H x 650D	598W x 1645H x 650D	598W x 1755H x 650D	598W x 1755H x 650D	699W x 1725H x 723D	796W x 1725H x 723D	796W x 1725H x 723D

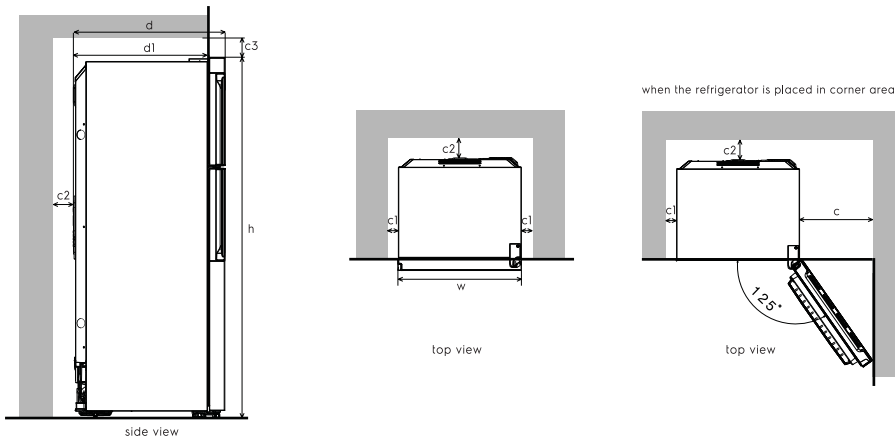
bottom mount



EBB3702K-H EBB3742K-A EBE4500A-B EME3700H-A EQE6000A-B EQE6879A-B ESE6101A-BMY ESE6141A-BMY ESE6645A-BMY

specifications											
gross capacity (litres)	360	360	453	363	600	680	606	606	646		
net capacity (litres)	335	335	421	337	541	609	577	571	619		
fridge / freezer (litres)	250 / 85	250 / 85	296 / 125	210 / 52 / 75	398 / 143	371 / 147 / 91	381 / 196	375 / 196	402 / 217		
door colour	high gloss black	arctic silver	arctic silver	arctic silver	dark stainless steel	glossy dark grey stainless steel	mat black	mat black	black glass		
door alarm	yes	yes		yes	yes	yes	yes	yes	yes		
refrigerant	R600a	R600a	R600a	R600a	R600a	R600a	R600a	R600a	R600a		
energy rating	5 star	5 star	5 star								
fridge features											
chiller	TasteSeal	TasteSeal		TasteSealPlus		TasteSealFlex					
crisper	TasteLockAuto	TasteLockAuto	TasteLockPlus	TasteLock	TasteLockPlus	TasteLockAuto	TasteLock	TasteLock	TasteLock		
cooling system	EvenTemp	EvenTemp	EvenTemp	EvenTemp	EvenTemp	TwinTech	EvenTemp	EvenTemp	EvenTemp		
inverter compressor	yes	yes	yes	yes	yes	yes	yes	yes	yes		
water dispenser	-	4L tank				3L tank		2L tank	2L tank		
ice maker	Twist & serve	Twist & serve	Twist & serve	Twist & serve	Twist & serve	AutoIce	Twist & serve	Twist & serve	Twist & serve		
tasteguard	yes	yes	yes	yes	yes	yes	yes	yes	yes		
flexstor			yes	yes	yes	yes					
others											
product dimension (mm)	598W x 1755H x 650D	598W x 1755H x 650D	699W x 1725H x 723D	598W x 1855H x 650D	896W x 1725H x 782D	913W x 1782H x 749D	911W x 1780H x 706D	911W x 1780H x 706D	911W x 1780H x 746D		

Dimension



top mount

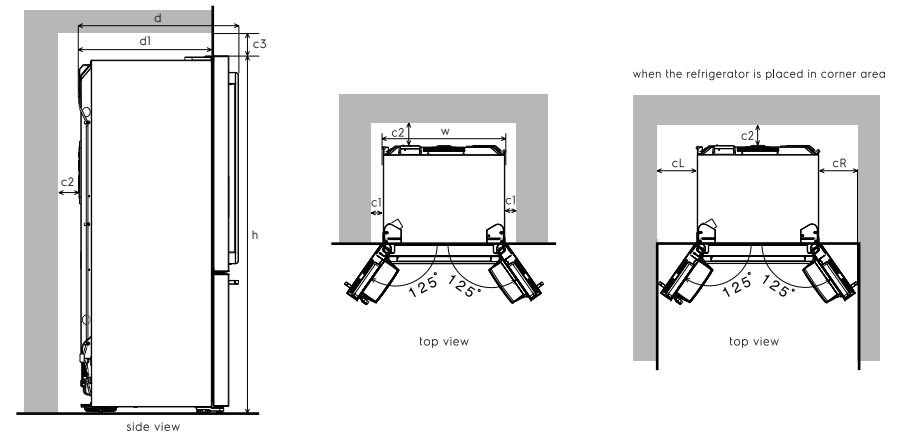
(in mm)	w	d	d1	h	c	c1	c2	c3
ETB2302J-A	540	615	540	1,405	350	30	50	90
ETB2502J-A	540	615	540	1,470	350	30	50	90
ETB2802J-A	540	615	540	1,605	350	30	50	90
ETB3400K-A / H	598	650	575	1,645	350	30	50	90
ETB3440K-H	598	650	575	1,645	350	30	50	90
ETB3700K-A	598	650	575	1,755	350	30	50	90
ETB3740K-H	598	650	575	1,755	350	30	50	90
ETB4600B-A	699	723	641	1,725	350	30	50	90
ETB5400B-A / H	796	723	641	1,725	350	30	50	90

bottom mount

(in mm)	w	d	d1	h	c	c1	c2	c3
EBB3702K-H	598	650	575	1,755	350	30	50	90
EBB3742K-H	598	650	575	1,755	350	30	50	90
EBE4500A-B	699	723	641	1,725	350	30	50	90

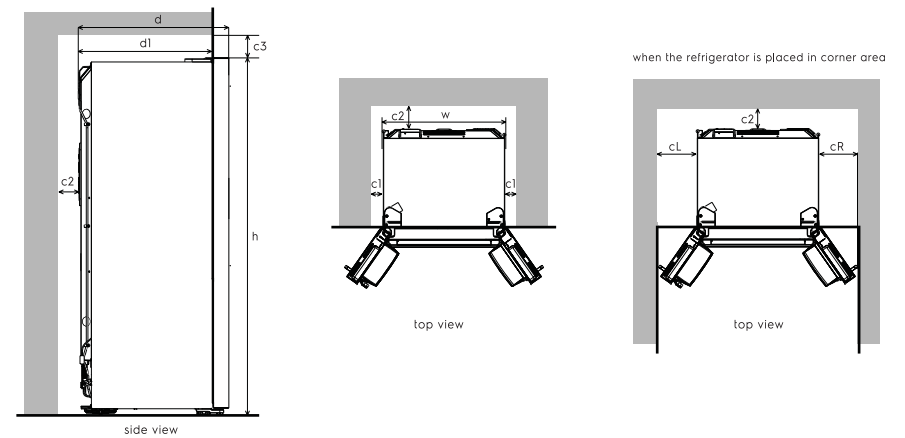
multi door

(in mm)	w	d	d1	h	c	c1	c2	c3
EME3700H-A	598	650	575	1,855	350	30	50	90



multi door

(in mm)	w	d	d1	h	cL	cR	c1	c2	c3
EQE6879A-B	913	749	625	1,782	260	355	30	50	90



side by side

(in mm)	w	d	d1	h	cL	cR	c1	c2	c3
ESE6101A-BMY	911	706	-	1,780	350	430	30	50	90
ESE6141A-BMY	911	706	-	1,780	350	430	30	50	90
ESE6645A-BMY	911	746	-	1,780	350	430	30	50	90