



Malaysia

Electrolux Home Appliances Sdn Bhd
Co. No. 198801008304 (175660-T)

address: Unit T2-L7, Level 7, Tower 2, PJ 33,
No. 3, Jalan Professor Khoo Kay Kim,
Seksyen 13, 46200 Petaling Jaya,
Selangor, Malaysia.

telephone: (+603) 7843 5999
fax: (+603) 7955 5511
website: electrolux.com.my
facebook: facebook.com/ElectroluxMalaysia
instagram: instagram.com/electroluxmy

CONSUMER CARE CENTRE

address: Lot C6, No. 28, Jalan 15/22,
Taman Perindustrian Tiong Nam,
Seksyen 15, 40200 Shah Alam,
Selangor Darul Ehsan, Malaysia.

hotline: 1300 88 1122 / 1800 81 9239
fax: (+603) 5524 2521
e-mail: malaysia.customercare@electrolux.com



Dealer's Stamp

Version: 2022-03




Cooking Range 2022

Create delicious
tastes, effortlessly



Swedish thinking. Better living.



A kitchen that knows what matters

At Electrolux, our philosophy is simple: life in the kitchen should be seamless and intuitive.

That's why we've developed a new range with smart, sustainable features and clean lines for an effortless experience. So, you can concentrate on the things that make you happy: making and sharing great food with the people you love.

**Swedish thinking.
Better living.**

Cooking

Effortless cleaning with SteamClean hood

SteamClean technology makes light work of a once tedious chore. Simply press one button and the hood injects steam to clean all the hard to reach places inside the chimney. By effortlessly removing stubborn grease and grime, the cooker hood maintains efficient air flow to provide you with a more pleasant cooking and dining experience.

Lower your utility bills with UltimateTaste gas hobs

The blue flame burns efficiently to turn up the flavours faster, whilst also keeping your energy costs down.

Dishwashing

Our range of quiet, fuss-free dishwashers offer superb results – sparkling dishes, ergonomic stacking and swift cycles, keeping your favourite dishware beautifully clean.

Next -level baking with SteamBake ovens

With SteamBake, you can create bakery-style bread in your own home. The added steam allows dough to rise more effectively than conventional heating. The steam helps to create an exquisitely soft centre, while the combination of hot air delivers deliciously glossy crusts.





Built-in Ovens

Brilliant simplicity

Our steam function is the secret to give your dishes juiciness on the inside and crispiness on the outside. Paired with intuitive controls, you can effortlessly grill, bake or roast to perfection.

For delicious taste, just add steam

Our advanced steam functions ensure you cook with just the right balance of steam and heat. The added moisture conducts heat faster so you will discover colours are richer, skins are crispier and textures are more tender and juicy.*



Effortless baking

Adding steam to your baking program can lift your baking skills to a whole new level. The Bake + Steam function on our new ovens uses a touch of steam to create a richer and glossier colour, a crispier crust and soft delicious texture for your home-baked goodies.

*Selected models

Features



SteamPro delivers ultimate taste results.

SteamPro combines steam with sensors and control for the ultimate in taste and texture.



SteamRoast for crisp, yet succulent meats.

SteamRoast enhances your cooking so you can enjoy food that's crisp outside yet succulent inside.



SteamBake for bakery-style bread at home.

Add SteamBake to your repertoire to enjoy fluffy, yet crisp home-baked goodies.



Smart food probe monitors core temperatures.

Smart food probe monitors the core temperature of food to keep meat succulent and juicy.



VarioGuide recipes help to deliver great results.

Choose a recipe with the VarioGuide touch-screen and the oven will select the correct settings.



SurroundCook circulates air for even-cooking.

Consistently distributed heat delivers evenly cooked food, without swapping oven trays.



Pizza program grills above and cooks from below.

The dedicated pizza program grills from above and cooks from below for perfect toppings and base.



Steam Assisted Cleaning makes chores easier.

Use steam to assist with dissolving grease and residue on the oven's interior surfaces.



Removable oven door for easy cleaning.

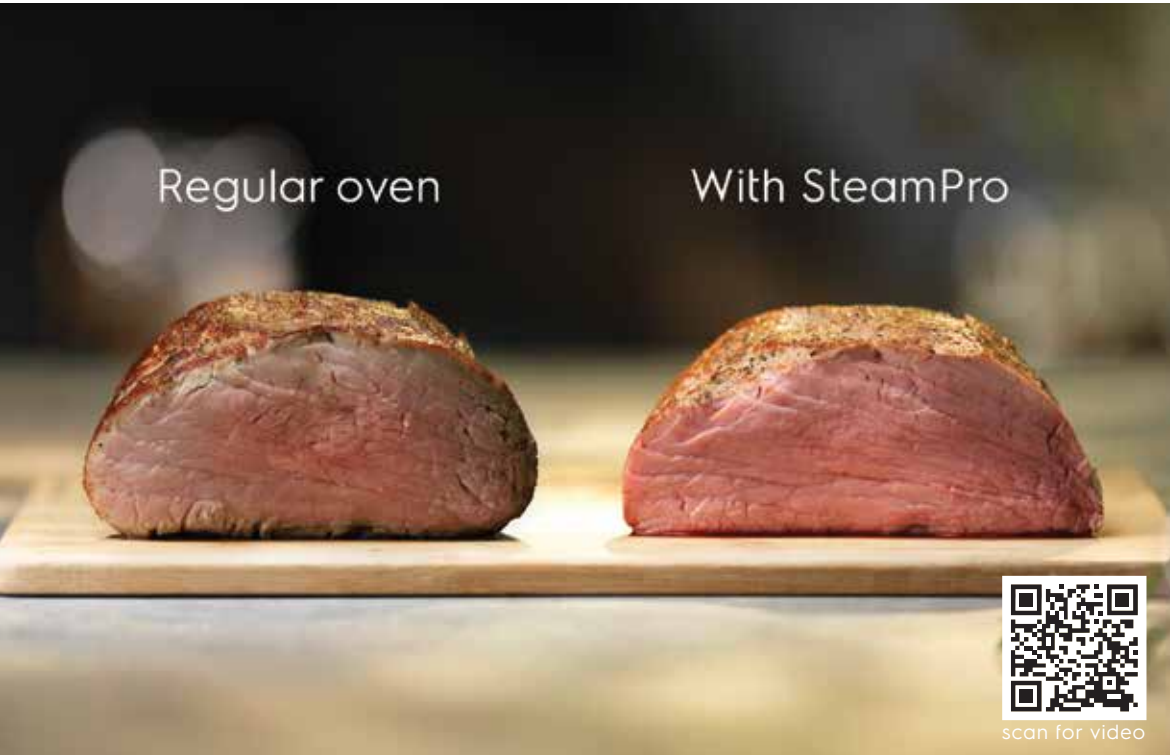
Easily remove the oven door and glass from the hinges for an easy and complete clean.



Telescopic runners provide easy access.

Baste during cooking and slide trays in and out of the oven with easy access telescopic runners.

UltimateTaste 900 built-in oven



SteamPro combines steam with sensors and control for the ultimate in taste and texture.



Smart **food probe** monitors core temperatures.



Steamify simplifies steam cooking by adding the right amount of steam to improve taste and texture.



Select desired **auto program**, input weight or insert the food probe and let the oven do the rest.



60cm UltimateTaste 900 built-in oven with 70L capacity

KOAAS31X

Technical info

Product dimensions (mm)
595 (W) x 594 (H) x 567 (D)

Features

- SteamPro
- Smart Food probe
- Steamify
- No. of functions: 25
- Auto programs
- Touch display controls
- Steam assisted cleaning
- SoftClose hinge design
- Quadruple-glazed door with shatterproof glass
- Telescopic runners
- Total input rating: 3,500W
- Accessories:
Wire shelf, Enamel dripping pan, Enamel cake tray, Stainless steel pan

60cm UltimateTaste 900 built-in compact steam oven with 43L capacity

KVAAS21WX

Technical info

Product dimensions (mm)
595 (W) x 455 (H) x 567 (D)

Features

- SteamPro
- Smart food probe
- Steamify
- No. of functions: 25
- Touch control
- Auto programs
- Steam assisted cleaning
- SoftClose hinge design
- Quadruple-glazed door with shatterproof glass
- Total input rating: 3,000W
- Accessories:
Wire shelf, Enamel dripping pan, Enamel cake tray, Stainless steel pan



UltimateTaste 700 built-in oven



SteamRoast enhances your cooking so you can enjoy food that's crisp outside yet succulent inside.



Smart **food probe** monitors core temperatures.



Easy **pyro cleaning** at high temperature.



Pizza program grills above and cooks from below.

60cm UltimateTaste 700 built-in single oven with 72L capacity

KOCBP21XA



Technical info

Product dimensions (mm)
595 (W) x 594 (H) x 569 (D)

Features

- SteamRoast
- Smart food probe
- Touch control
- Pyro cleaning
- SoftClose hinge design
- Triple glazed door with shatterproof glass
- Dedicated pizza program
- No. of functions: 19
- Total input rating: 3,390W
- Accessories:
Wire shelf, Enamel dripping pan, Enamel cake tray

UltimateTaste 500 built-in oven



Add **SteamBake** to your repertoire to enjoy fluffy, yet crisp home-baked goodies.

60cm UltimateTaste 500 built-in single oven with 72L capacity

KODDP71XA



Technical info

Product dimensions (mm)
595 (W) x 594 (H) x 569 (D)

Features

- SteamBake
- Smart food probe
- Touch control with knob
- Pyro cleaning
- SoftClose hinge design
- Triple glazed door with shatterproof glass
- Telescopic runners
- Dedicated pizza program
- No. of functions: 10
- Total input rating: 3,490W
- Accessories:
Wire shelf, Enamel dripping pan, Enamel cake tray

60cm UltimateTaste 500 built-in single oven with 72L capacity

KODGH70TXA



Technical info

Product dimensions (mm)
595 (W) x 594 (H) x 569 (D)

Features

- SteamBake
- Touch control with knob
- Steam assisted cleaning
- Dedicated pizza program
- Stainless steel finishing
- Double-glazed door
- Telescopic runners
- No. of functions: 9
- Total input rating: 2,990W
- Accessories:
Wire shelf, Enamel dripping pan, Enamel cake tray



60cm UltimateTaste 300
built-in single oven with
72L capacity

KOHGH00XA



60cm UltimateTaste 300
built-in single oven with
72L capacity

KOIGH00KA



60cm UltimateTaste 300
built-in single oven with
68L capacity

KOHLH00XA



Technical info

Product dimensions (mm)
595 (W) x 594 (H) x 569 (D)

Features

- Digital timer
- Touch control with knob
- Steam assisted cleaning
- Dedicated pizza program
- Double glazed doors
- Anti-fingerprint stainless steel finish
- No. of functions: 7
- Total input rating: 2,790W
- Accessories:
Wire shelf, Enamel dripping pan

Technical info

Product dimensions (mm)
595 (W) x 594 (H) x 569 (D)

Features

- Digital timer
- Touch control with knob
- Steam assisted cleaning
- Dedicated pizza program
- Double glazed doors
- Black glass finish
- No. of functions: 5
- Total input rating: 2,790W
- Accessories:
Wire shelf, Enamel dripping pan,
Enamel cake tray

Technical info

Product dimensions (mm)
595 (W) x 594 (H) x 569 (D)

Features

- Steam assisted cleaning
- Dedicated pizza program
- Double glazed doors
- Anti-fingerprint stainless steel finish
- Enamel cavity
- No. of functions: 5
- Total input rating: 2,790W
- Accessories:
Wire shelf, Enamel dripping pan

CombiQuick

CombiQuick allows you cook faster by combining convection functions with the grill and microwave.



⌚ 120 min
Regular oven

⌚ 60 min
CombiQuick oven



scan for video

60cm UltimateTaste 500
built-in compact oven
with 43L capacity

KVLBE00X



Technical info

Product dimensions (mm)
594 (W) x 455 (H) x 567 (D)

Features

- CombiQuick:
Convection + Microwave + Grill
- Touch control
- Auto cooking programs
- Dedicated pizza program
- AutoOff timer
- Slow cooking & dough proving function
- Triple-glazed door with shatterproof glass
- No. of functions: 17
- Total input rating: 3,000W
- Accessories:
Wire shelf, Enamel cake tray

built in oven



KOAAS31X



KVAAS21WX



KOCBP21XA



KODDP71XA



KODGH70TXA

specifications					
capacity (litres)	70	43	72	72	72
colour	black glass with stainless steel trim	black glass with stainless steel trim	black glass with stainless steel trim	black glass with stainless steel trim	stainless steel
oven features					
no. of functions	25	25	19	10	11
timer	yes	yes	yes	yes	yes
grill	yes	yes	yes	yes	yes
steam	SteamPro	SteamPro	SteamRoast	SteamBake	SteamBake
control panel	touch	touch	touch	touch with knob	touch with knob
cleaning function	steam assisted	steam assisted	pyrolytic	pyrolytic	steam assisted
food probe	yes	yes	yes	yes	-
no. of shelf positions	5	4	5	5	5
telescopic rails	yes	-	-	yes	yes
door glazing	quadruple glazed	quadruple glazed	triple glazed	triple glazed	double glazed
removable door	yes	yes	yes	yes	yes
softclose hinges	yes	yes	yes	yes	yes
light	yes	yes	yes	yes	yes
accessories	wire shelf, enamel dripping pan, enamel cake tray, stainless steel pan	wire shelf, enamel dripping pan, enamel cake tray, stainless steel pan	wire shelf, enamel dripping pan, enamel cake tray	wire shelf, enamel dripping pan, enamel cake tray	wire shelf, enamel dripping pan, enamel cake tray
others					
product dimension	595 (W) x 594 (H) x 567 (D)	595 (W) x 455 (H) x 567 (D)	595 (W) x 594 (H) x 569 (D)	595 (W) x 594 (H) x 569 (D)	595 (W) x 594 (H) x 569 (D)



KOHGH00XA



KOIGH00KA



KOHLH00XA



KVLBE00X

built in oven
& microwave

specifications				
capacity (litres)	72	72	68	43
colour	stainless steel	black glass	stainless steel	black glass with stainless steel trim
no. of functions	7	5	5	17
timer	yes	yes	yes	yes
grill	yes	yes	yes	yes
steam	-	-	-	-
control panel	touch with knob	touch with knob	dial knob	touch
cleaning function	steam assisted	steam assisted	steam assisted	-
food probe	-	-	-	-
no. of shelf positions	5	5	5	4
telescopic rails	-	-	-	-
door glazing	double glazed	double glazed	double glazed	triple glazed
removable door	yes	yes	yes	yes
softclose hinges	-	-	-	-
light	yes	yes	yes	yes
accessories	wire shelf, enamel dripping pan	wire shelf, enamel dripping pan, enamel cake tray	wire shelf, enamel dripping pan	wire shelf, enamel cake tray
others				
product dimension	595 (W) x 594 (H) x 569 (D)	595 (W) x 594 (H) x 569 (D)	595 (W) x 594 (H) x 569 (D)	595 (W) x 455 (H) x 567 (D)



Microwave Ovens

Whip up a variety of your favourite meals in no time.

60cm UltimateTaste 500
built-in grill microwave
oven with 25L capacity

Technical info

Features

EMS2540X



Product dimensions (mm)
595 (W) x 388 (H) x 374 (D)

Cut-out dimensions (mm)
560+8 (W) x 380+2 (H) x 500 (D)

- Multi-section cooking
- Grill function
- 8 Automatic programs
- Defrost setting
- QuickStart
- Child lock

60cm UltimateTaste 500
built-in grill microwave
oven with 20L capacity

Technical info

Features

EMS2085X



Product dimensions (mm)
596 (W) x 389 (H) x 355 (D)

Cut-out dimensions (mm)
560+8 (W) x 380+2 (H) x 340 (D)

- CombiGrill program
- Grill function
- 8 Automatic programs
- Defrost setting
- QuickStart
- Child lock

30L freestanding grill
microwave oven

Technical info

Features

EMS3087X

Product dimensions (mm)
539 (W) x 300 (H) x 438 (D)



- IQ touch control
- Microwave with 5 power levels
- Quick start button
- Defrost function
- 14 automatic programmes
- 5 steam programmes with accessory
- Fully programmable multi-stage cooker with timer
- Child lock

23L freestanding grill
microwave oven

Technical info

Features

EMG23K38GB

Product dimensions (mm)
498 (W) x 299 (H) x 362 (D)



- Grill function
- Glass turntable
- 5 power levels

23L freestanding
microwave oven

Technical info

Features

EMM20K18GWl

Product dimensions (mm)
451 (W) x 258 (H) x 331 (D)



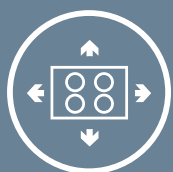
- 5 power levels
- Glass turntable



Free-standing cooker

Create a feast

Preparing to wow a large crowd? The generous internal capacity ensures that there's more than enough to satisfy your guests



Spacious Layout

Allows you to cook multiple dishes simultaneously.



Powerful Burner

Gives you maximum heat quickly and efficiently, especially for fast wok-frying.



Soft Closing Lid

Gently and safely covers your free-standing cooker.



Precision Heat Control

Makes for delicious, perfectly-cooked dishes every time.



3-layer Glass Cool Door

Keeps in the heat when cooking while being cool to the touch on the outside.



XXL Oven

Extra large 130L oven with double fan assist for even heat distribution lets you cook more food at the same time.

When it comes to entertaining, you need a bit more room to move. The 90cm oven is equipped to handle the extra demands. You can even roast a whole turkey to perfection in this cooker.



90cm UltimateTaste 700 free-standing cooker with gas hob and 130L electric oven

EKM9689X

Technical info

Product dimensions (mm)
900 (W) x 860 (H) x 600 (D)

Features

- 5 burners with wok pan support
- Cast iron pan support
- Safety flame device
- Turbo grilling
- Minute minder
- Fan-assisted heat circulation
- Anti-tilt
- 3-layer glass cool door
- With turnspit
- Burner power: 4.5kW/ 3.0kW/ 2.0kW x 2/ 1.0kW
- 130-litre oven capacity
- Voltage:220-240V
- Frequency: 50-60 Hz
- Total connected load: 3000W
- Number of oven fan: 2
- Power cable length: 1.5m
- 7 cooking functions:





Malaysia

Electrolux Home Appliances Sdn Bhd
Co. No. 198801008304 (175660-T)

address: Unit T2-L7, Level 7, Tower 2, PJ 33,
No. 3, Jalan Professor Khoo Kay Kim,
Seksyen 13, 46200 Petaling Jaya,
Selangor, Malaysia.

telephone: (+603) 7843 5999
fax: (+603) 7955 5511
website: electrolux.com.my
facebook: facebook.com/ElectroluxMalaysia
instagram: instagram.com/electroluxmy



CONSUMER CARE CENTRE

address: Lot C6, No. 28, Jalan 15/22,
Taman Perindustrian Tiong Nam,
Seksyen 15, 40200 Shah Alam,
Selangor Darul Ehsan, Malaysia.

hotline: 1300 88 1122 / 1800 81 9239
fax: (+603) 5524 2521
e-mail: malaysia.customercare@electrolux.com

Dealer's Stamp

Version: 2022-06



Taste

Small Domestic
Appliances



Swedish thinking. Better living.



Oven toasters and more!

The multi-function table top mini oven is a superb yet convenient toaster to bake, heat, cook and grill all your favourite food like cookies, muffins, cheese toasts, chicken nuggets, fish fingers, mini pizza, croissants, snacks and endless finger food!

21L UltimateTaste 500 Oven Toaster

EOT2115X



Features

- 1,500W
- 60-minute timer
- Stay-on function
- Temperature: 90-230°C
- Power switch functions:
 - Top
 - Bottom
 - Top + Bottom
 - Top + Convection
 - Top + Bottom + Convection
- Accessories: Grill rack, Non-stick Baking Tray, Tray Lifter, Removable Crumb Tray
- Colour: Black

9L UltimateTaste 300 Oven Toaster

EOT0908X



Features

- 800W
- 60-minute timer
- Stay-on function
- Temperature: 90-230°C
- Accessories: Grill rack, Non-stick Baking Tray, Tray Lifter, Crumb Tray
- Colour: Black

